



# What's Inside

MCF Staff and Board	4
Donors and Fundholders	
Building an Endowment for WYSO's Center for Music	5
Turning Lifelong Values Into Lasting Impact	6
Carol and John Toussaint Leave a Lasting Legacy	7
MCF Funds and Grants	
The Big Share Builds Community	8
Grants From the Community Impact Fund	9
Gifts to MCF Community Funds	11
Field of Interest Grants	13
A Fund for Women	16
Goodman Nonprofit Center	17
Giving Partner Funds	18
Finance and Operations	20
Fundholders and Funds	
Legacy Giving	22
MCF Fundholders and Funds	24

# About the Cover

## The Goodman Nonprofit Fellowship Program

When Madison Community Foundation launched the Irwin A. and Robert D. Goodman Nonprofit Center, bringing nonprofit leaders together to build a supportive community was one of its goals. In 2025, the Center launched its first core program — the Goodman Nonprofit Fellowship. This program brought together a cohort of nonprofit executive directors for a 10-month leadership development program.

The inaugural cohort, pictured on the cover, represents a breadth of leadership talent from nonprofit organizations across the region. They are leaders who are passionate about learning and growing in their skills so they can strengthen their organizations, and through their work, our community. The cohort includes:

**Seated, from left to right:** Emily Hyde Cawley, *Executive Director of Wisconsin Women's Network*; Esther Ama Safia Ptak, *Executive Director of African Center for Community Development*; Betsy Parker, *Executive Director of Aldo Leopold Nature Center*; Jason Mack, *Executive Director of Open Doors for Refugees*; Rachael Maysels, *Executive Director of FairShare CSA Coalition*.

**Standing from left to right:** Geraldine Paredes Vásquez, *CEO of YWCA Madison*; Jennie Mauer, *Executive Director of Wisconsin Head Start Association*; Tanya Zastrow, *Executive Director of Olbrich Botanical Gardens*; Regina McConnell, *Executive Director of East Madison Community Center*; Michael Etheridge, *Executive Director of Road Home Dane County*; Rosa Thompson, *Founding Executive Director of Black Girl Magic Educational Services*; Conor Moran, *Executive Director of Madison Public Library Foundation*; DeAndre Martin, *Executive Director of CEOs of Tomorrow*; Deborah Kaddu-Serwadda, *Executive Director of Women in Education Leadership Foundation*; Angela Laufenberg, *Executive Director of Samaritan Counseling Center of Southern WI*; Marie Everett, *Co-Executive Director of Eastmorland Community Center*.

**Not Pictured:** Kendra Deja, *Executive Director of Solace Friends*; Virginia Hughes, *Co-Executive Director of Rooted WI*.

You can learn more about the Goodman Nonprofit Fellowship and the work of the Goodman Nonprofit Center at [gnpc.org](https://gnpc.org).

Dear Friends,

Each year, we are reminded that philanthropy is not just about generosity, it's about possibility — what we can achieve when people, businesses, government and nonprofits come together with a shared commitment to positive change that strengthens our community.

In the pages that follow, you will see the many ways that commitment came to life in 2025. From nearly \$39 million in contributions, to \$58 million in investment gains, \$31 million distributed to the community, the launch of the Goodman Nonprofit Center, and the development of a third-party asset management program, this was a year of strong momentum and thoughtful evolution. Together with you, we are creating an extraordinary resource — one that responds to today's needs and opportunities while also building a legacy that will support our community for generations to come.

At the same time, as we wrapped up 2025, change was on the horizon. Bob announced his plan to retire in 2026 after serving MCF for 19 years. It has been his honor to serve the community this way, and he is grateful for the incredible people who have been part of this journey. From the Board's perspective, Bob's deep commitment to MCF's mission, vision and values, and his unwavering application of the unique value MCF brings to the community, have been instrumental in MCF's growth and success. We are deeply grateful for his service and the legacy he leaves. As we write this, the search for a new CEO is underway.

Finally, and most importantly, we thank you for the trust you place in MCF. The work of the community's foundation is only possible because of you — our donors, fundholders, nonprofit partners and neighbors. For more than 80 years, MCF has been a reliable and growing source of support for our community. That story continues today, and it belongs to all of us.

With gratitude,



**Anne Lucke**  
*Board Chair*



**Bob Sorge**  
*President and CEO*

---

## Mission

MCF will engage Greater Madison in philanthropy to advance a more vibrant and equitable community.

## Vision

MCF will serve as a trusted philanthropic leader, enhancing the quality of life in Greater Madison, and fostering a community where fairness, inclusion and respect thrive.

## Values

- Integrity** We create trust by acting with transparency.
- Generosity** We inspire giving to improve our world.
- Effectiveness** We identify opportunities, align actions and produce results.
- Sustainability** We build endowments to create a legacy for the future.
- Equity** We advance fairness, inclusion and respect.



**Madison Community Foundation Board of Governors**

**From left to right:** Natalie Erdman, *City of Madison (ret.)*  
 E.G. Schramka, *Irwin A. and Robert D. Goodman Foundation, Inc.*  
 Gloria Ladson-Billings, *University of Wisconsin-Madison (ret.)*  
 Noble Wray – Vice Chair, *City of Madison (ret.)*  
 Anne Lucke – Chair, *Wisconsin Foundation and Alumni Association*  
 Jeff Bartell, *Quarles and Brady LLP (ret.)*  
 Therese Gulbransen, *American Printing Company*  
 Christine Rew Barden, *Reinhart Boerner Van Deuren, s.c.*  
 Gary Mecklenburg – Treasurer, *Northwestern Memorial Healthcare (ret.)*  
 Nancy Boebel, *Cream City Marketing*  
 Anna Burish, *UBS Financial Services, Inc.*  
 Tripp Widder, *Mobs, Widder, Paradise, Attorneys (ret.)*  
 Eugenia Podestá, *Vital Voices Global Partnership: Synergy Coworking*  
**Not pictured:** Frances Huntley-Cooper, *DWD Workers Compensation (ret.)*



**Madison Community Foundation Staff**

**Seated:** David Koehler, *Vice President of Advancement*  
 Jeneen Hartley, *Vice President of Community Impact*  
 Carmen Jeschke, *Vice President of Finance*  
 Mai Her, *Accountant*  
 Lex Page, *Donor Engagement Coordinator*  
 Catherine Frerker, *Office Coordinator*  
**Standing:** Bob Sorge, *President and CEO*  
 Julia Carabelli, *Digital Content Manager*  
 Liz Varma, *Associate Director, Executive Office*  
 Angela Davis, *Director of Grantmaking*  
 Camille Zaroni, *Director of Donor & Giving Partner Engagement*  
 Caitlin Ryan, *Director of Donor Engagement*  
 Harmony Kronick, *Senior Operations Director*  
 Nick Pjevach, *Donor Database Manager*  
 Jazzmine Haygood, *Community Impact Coordinator*  
 Beth Hedges, *Accounting Director*  
 Becki Fiegel, *Director of Communications*  
 Alison Helland, *Director of Research, Advocacy & Advisor Engagement*  
 Andy Davey, *Director, Goodman Nonprofit Center*

# Fundholder Spotlight

## Building an Endowment for WYSO's Center for Music

For the last five decades, Wisconsin Youth Symphony Orchestras (WYSO) have provided high-quality music education to any young person in the Greater Madison area who wants to play an instrument. WYSO serves about 540 students each year through its five orchestras, multiple chamber ensembles, private lessons and other specialized programs. "What we are building goes far beyond musical skill," said Michelle Kaebisch, WYSO's Executive Director & Philharmonia Conductor. "Students learn discipline, how to problem-solve in real time, and how to listen and collaborate at a deep level."

In 2024, WYSO opened the doors of its new, state-of-the-art Center for Music on East Washington Ave. The 40,000-square-foot space has three large rehearsal spaces, nine rehearsal studios, classrooms, a piano lab, a music library, small multi-purpose studios, administrative offices and anything a musician might need to succeed.

"Having all of our ensembles under one roof has created a clear sense of progression," explained Kaebisch. "Younger students can see and hear what's possible at the highest level of the organization, which gives them something to aspire to." The new space has provided opportunities for organic community building among WYSO students and parents that wasn't possible when rehearsal spaces were spread across multiple locations.

This past year, WYSO established a Building Operations Endowment fund at MCF to ensure that the Center for Music remains a vibrant, well-maintained community resource for generations to come. "Choosing MCF to house the fund was an easy decision," Kaebisch said. "We wanted this fund to live with an organization that is deeply invested in Madison's cultural future, and MCF is a trusted partner in that work."

# 2025 FUNDS AND FUNDHOLDERS



# Turning Lifelong Values Into Lasting Impact

Service has shaped Doug and Sherry Caves' lives from the start. They met as freshmen at Oklahoma State University and, after graduating, got married and joined the Peace Corps. They benefitted from a program that valued connecting people and nations to the benefit of both.

While in the Peace Corps, Doug shifted his academic focus to economics, which brought the couple to the University of Wisconsin-Madison for graduate school. There, Doug took a course taught by Lau Christensen. They began working together and eventually formed a business partnership that would define Doug's career.

## Building a Life Rooted in Purpose

Doug's partnership at Christensen Associates, and Sherry's involvement in volunteer organizations across the community, allowed the Caves to build a life and a livelihood that recognized, "We are all in this together."



"When you have good fortune," Doug said, "it's only natural to share that." Their success allowed them to support causes that reflected their values — from conservation and education to humanitarian efforts locally and around the world.

As their philanthropy grew, Doug and Sherry established a private family foundation to organize their giving. The foundation allowed Doug and Sherry to bring greater intention to their giving and provided an effective tool to involve their entire family. "It let us model generosity for our children," Sherry added. The couple wanted their children to experience a sense of responsibility and connection.

## Transitioning to a Donor Advised Fund at MCF

Over time, Doug and Sherry became interested in reducing the administrative demands of running a private foundation while keeping their focus on what mattered most: thoughtfully deciding where their gifts could do the greatest good. At the same time, they had long worked with Buttonwood and didn't want to lose that relationship.

Then they learned about MCF's third-party asset management program. The model offered a solution: the simplicity of a donor advised fund, combined with the ability to retain their advisor.

"I think it's a great solution for anyone who wants to use their assets for life-long giving, but doesn't want to manage the whole thing themselves," Doug said. "MCF lets you focus on researching the recipients and plan how you really want to have an impact with disbursing those assets."

For Doug and Sherry, sharing remains a central part of their lives — a continuation of the values that first took shape decades ago, having an impact they hope will endure for generations.

## When Third-Party Asset Management Makes Sense

Greg Rademacher, President of Buttonwood Partners, Inc., works with many clients who have chosen to create family foundations for their giving. He also was the first advisor to join MCF's new Third-Party Asset Management program and is Doug and Sherry Caves' investment advisor.

"As donor advised funds have become more flexible over time, the situations in which a private family foundation make sense have shrunk," he said.

"For the Caves, the giving patterns and administration of their private foundation had evolved to more closely resemble that of a traditional donor advised fund."

The Caves expressed an interest in a simpler solution. "The primary characteristic of a private foundation that donors are most interested in preserving is a customized investment strategy," Rademacher explained. "Many donors also value a connection to the community, which the commercial providers lack. Ultimately, the Third-Party Asset Management program that MCF offered addressed all their needs."

# Carol and John Toussaint Leave a Legacy for the Community

“Philanthropy isn’t just money, and it isn’t whether you have it, or you don’t. It’s whether you have the spirit and the will to share it,” Carol Toussaint once said.

Carol and her husband, John Toussaint, lived that belief. Throughout their lives, they gave their time, their talents and their resources to strengthen the Madison community. With their passing in 2025, Madison lost two thoughtful, generous community members but gained a legacy that will continue their impact for years to come.

## Building a Foundation for the Community

Madison Community Foundation reflects Carol’s vision and leadership.

In 1980, she was asked to help guide the newly designated community foundation, then a \$500,000 entity trying to define its role. Carol helped articulate a clear purpose and build the public support needed for the Foundation to grow and thrive.

She later served as executive director and remained closely involved as a member of the Board of Governors. “I couldn’t be more proud of the association with the Community Foundation,” she told the Wisconsin Historical Society. “I do believe that it is an institution that is properly positioned to serve this entire community.”

Her commitment to civic life extended well beyond MCF, including involvement with the League of Women Voters and the Rotary Club of Madison.

## A Life of Curiosity, Service and the Arts

John’s contributions to the community were just as meaningful and reflected his passions.

A physician by profession, he brought the same care and devotion to his interests. John expressed his love of music by singing in choirs, playing handbells and serving as a substitute organist. He and Carol were patrons of the arts, supporting many organizations with their giving and creating the John and Carol Toussaint Overture Concert Organ Fund to provide permanent support for this community treasure.

John also had a lifelong love of books and reading, which led him to volunteer with UW-Madison’s Memorial Library and the Madison Public Library. John eventually took over running the Memorial Library book sale, which he expanded into a successful semi-annual event.



## Leaving a Legacy to Continue to Support Their Passions

John’s and Carol’s shared values shaped their involvement during their lifetimes and the legacy they chose to leave.

As Legacy Society Members, Carol and John worked with MCF to create a plan that balances long-term support with immediate impact, while keeping their family involved:

- **An endowed fund for the family to advise:** Half of the Toussaint’s gift will support their endowed donor advised fund, which their son Todd will continue to advise, ensuring the next generation remains connected to the family’s philanthropic values.
- **Immediate impact:** The remaining funds will be distributed over the next 10 years to a range of organizations, including PBS Wisconsin, A Fund for Women and the Madison Symphony Orchestra – providing support for these organizations’ immediate needs.

Through this thoughtful approach, Carol and John’s legacy reflects not just what they gave, but how they gave: with intention, flexibility and a deep commitment to community. Their lives helped shape Madison. Their legacy will continue to support it.

# Community Shares of Wisconsin

The Big Share, a community-wide day of giving hosted by Community Shares of Wisconsin to benefit local nonprofits, is a powerful example of collective impact. It brings together thousands of people from across our community to support a wide range of organizations working for change.

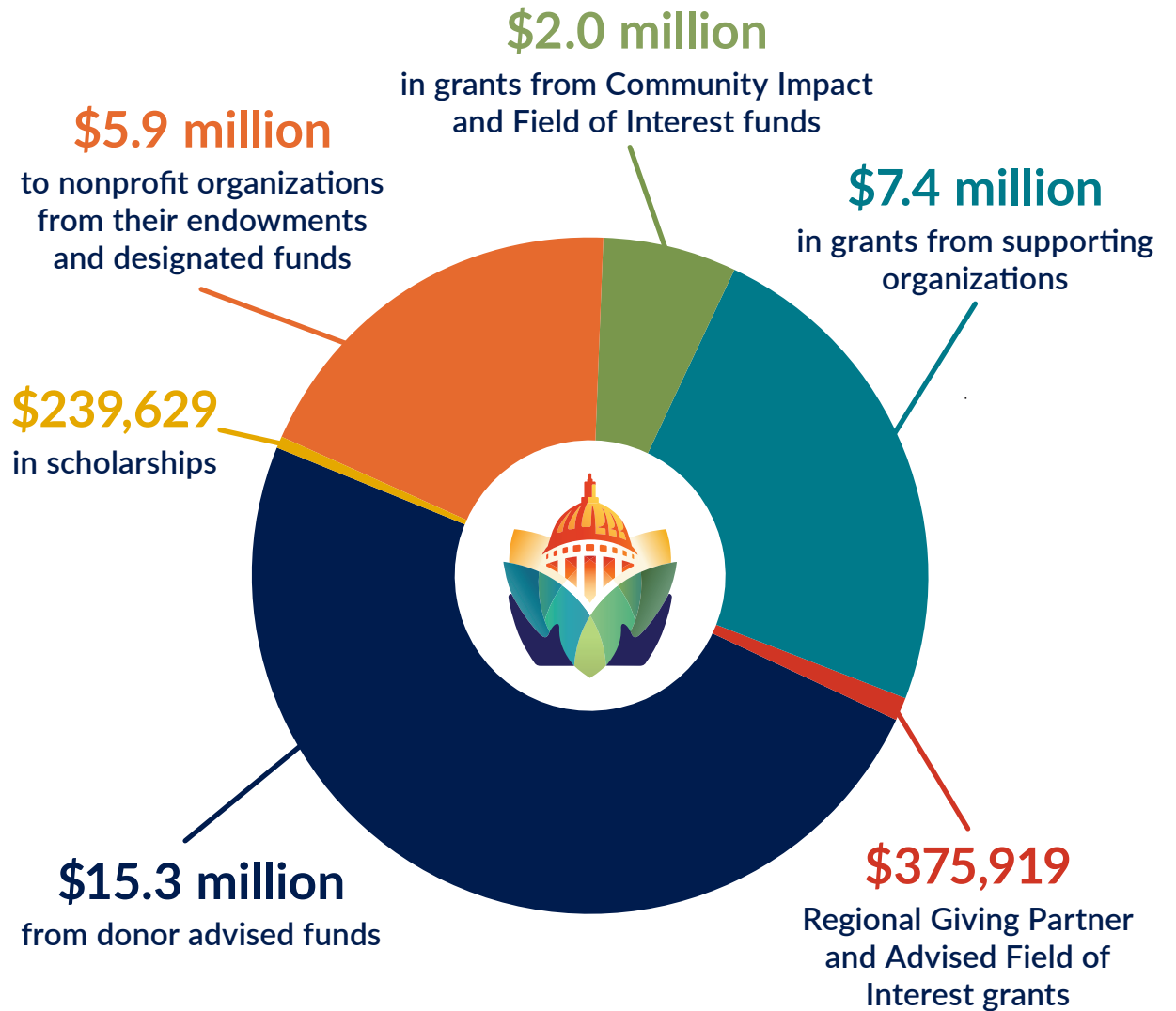
MCF has been the lead sponsor of the Big Share since its inception in 2015. "Helping these organizations strengthen their fundraising capacity and boost their income was a great fit for MCF," said Bob Sorge, MCF's President and CEO.

Since it began, The Big Share has helped raise more than \$6.5 million for Community Shares' 80+ member nonprofits.

But the Big Share is about more than just dollars raised — it's about people coming together around shared values and a shared vision for a stronger, more equitable community. MCF is proud to sponsor this work and celebrate its impact for our community.



## \$31.2 Million Distributed to the Community in 2025



# Grants From the Community Impact Fund

Madison Community Foundation has a rigorous, three-tiered approach to grantmaking involving staff, our Community Impact Committee and our Board of Governors. MCF typically receives more than 100 letters of inquiry from nonprofit organizations pursuing grants from the Community Impact Fund. Staff review these and work to identify projects and proposals that best fit MCF's five Community Impact focus areas: Arts & Culture, Community Development, Environment, Learning, and Organizational Capacity Building. Approximately 20% of the grant applications received are funded at some level each year.

In 2025, MCF awarded \$1.4 million in grants from the Community Impact Fund to 30 organizations.



*Friends of PBS*



*Aldo Leopold Nature Center*

## Centro Hispano

\$50,000 to place an Evaluation Specialist in Madison's schools.

## Clean Lakes Alliance

\$75,000 for the Renew the Blue Watershed Council.



*Clean Lakes Alliance*

## Community Action Coalition for South Central Wisconsin

\$100,000 for the Wisconsin Foodshed Partnership.

## Driftless Area Land Conservancy

\$50,000 to build trails at Wild Oaks Preserve.

## Foundation for Dane County Parks

\$35,000 to provide implicit bias training to staff and volunteers.

## Friends of PBS Wisconsin

\$50,000 for Wisconsin Hometown Stories: Madison.

## Gigi's Playhouse Madison

\$75,000 for the Building Expansion Project.

## Groundswell Conservancy

\$40,000 to expand the Land Conservation Team.

## Aldo Leopold Nature Center

\$40,000 to improve accessibility.

## ART House 360

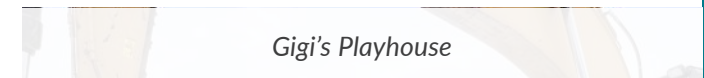
\$75,000 to transform an historic schoolhouse into a multicultural arts center.

## Black Girl Magic Educational Services

\$40,000 for the Black Girl Magic Legacy program.

## Briarpatch Youth Services

\$10,000 for the 10-Year Anniversary Tune-Up.



*Gigi's Playhouse*



## Kennedy Heights Community Center

\$40,000 to purchase an accessible van.

## Literacy Network

\$80,000 for the English for Citizenship program.

## Madison Area Community Land Trust

\$50,000 for affordable housing development in Dane County.

## Madison Symphony Orchestra

\$50,000 for the Centennial festival weekend.

## Maydm

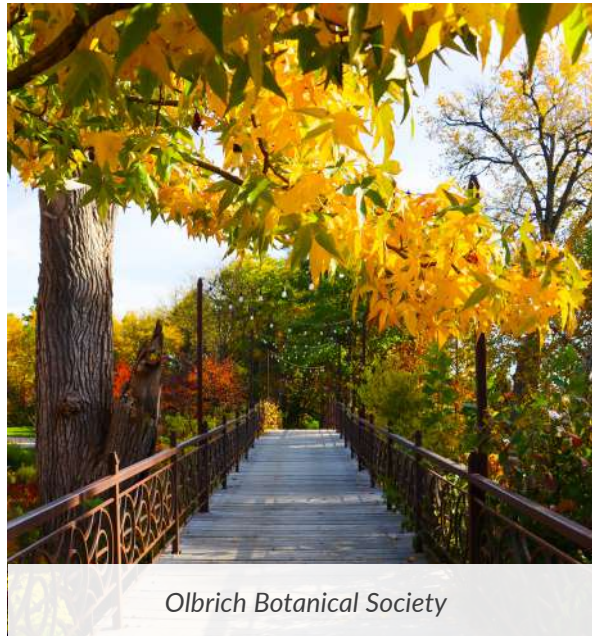
\$20,000 to expand programming and deepen impact.



Maydm

## Nehemiah Center for Urban Leadership Development

\$30,000 to support leadership and expand programming.



Olbrich Botanical Society

## Olbrich Botanical Society

\$50,000 for the Comprehensive Interpretation Plan.

## Own It: Building Black Wealth

\$37,500 to support mentoring and classes for new homeowners.

## PEPartnership

\$10,000 to improve the pantry network's database.

## Porchlight

\$25,000 for the A Place to Call Home program.

## Shelter Friends

\$20,000 to support fundraising efforts for the new men's shelter.

## Simpson Street Free Press

\$30,000 to support mentorship and science-based tutoring.

## The Center for Black Excellence and Culture

\$70,000 to develop the Center's first two years of programming.

## The Foundation for Black Women's Wellness

\$50,000 to expand the Madison Forward Fund.

## Wil-Mar Neighborhood Center

\$15,000 to purchase a 15-passenger van.

## YMCA of Dane County

\$100,000 commitment for an anticipated capital project.



YMCA of Dane County

## YWCA Madison

\$75,000 for leadership development and healing-center care training for staff.

## Zeteo Community

\$25,000 to develop a long-term residential program for survivors of sex trafficking.

# Gifts to MCF Community Funds

---

Anonymous (54)	James C. and Nancy P. Dast	Robert H. Gwynne	Joan G. Lerman and Kenneth O'Neill
Nancy M. Abraham	Kathy M. and R. Christian Davis	Terry L. Haller	Donna M. and Scott R. Lewein
Hildegard Adler	Bonnie Denmark-Friedman	Beth A. Hankins	Phyllis A. Lovrien
Jeremy Akins	Rahel Desalegne and Dr. Girma Tefera	Jennifer A. and John Hannon	Anne M. Lucke
Dick and Katie Albaugh	Kim and William Donovan	Grant and Beth Hedges	Stewart Macaulay
Barbara Anderson	Siddhi Doshi and Aaron Ray	Melinda V. and Mark P. Heinritz	James F. Mand
Ascendium Education Group	Gloria Dougherty and Ron Klimaitis	Loretta A. Himmelsbach and Marcy A. Worzala	Daniel Mansoor
Norman W. Bair	James E. and Jessica L. Doyle	William L. and Sara Lee Hinckley	William C. and Barbara J. Marten
Helen H. Baldwin	Sally J. Drew	Jay Huemmer	Christine E. and Harold F. Mayer
Diane K. Ballweg	Sabine Droste and Steve O'Neill	Anne M. and William Hunnex	Brian R. McCormick and Robert B. Latousek
Christine Rew and Christopher W. Barden	Carol L. and Eric Eberhardy	Steve Iltis	Laura J. and Mark R. McCormick
Susan J. and Ellis A. Bauman	James R. Eisner	Margaret and Paul Irwin	Hildegarde McGown
Luise Beringer	Jane M. Eisner	Susan M. Jackan	Cary L. and Brenda M. McNatt
Linda B. and Niles Berman	Kyle and Mary Engelke	Carmen I. and Greg E. Jeschke	Gary A. and Lynn K. Mecklenburg
Dana lin Bernstein	Victoria N. and Tim Enright	Gary L. and Lynn E. Johnson	Meghan M. Meeker
Patricia Blair	Daniel W. and Natalie Erdman	Lesley Johnson and Terry Marshall	Dona Meicher-Werwie
Susan M. DeGroot Boucher and Joseph W. Boucher	The Evjue Foundation, Inc.	Lee Jones and Rosemary Jones	Ronald A. Mensink
Robert W. and Mary J. Brennan	David K. Falk and JoAnne Robbins	Vickie L. and Michael J. Julka	Dianne Meyer
Robert J. and Mary Beth Brooks	Timothy M. and M. Renée Farley	Valerie A. and Andreas Kazamias	David and Ruth Miller
Bree Bruington	David and Maureen M. Flanagan	Lee Kempf	Mark F. and Jo Miller
Anna M. and Andrew D. Burish	Frances J. Fogerty and Deane F. Mosher	Mary E. Klink	Oscar Mireles
Barbara M. Carr	Brion Fox and Stephanie Robert	Kimberly K. Knoche	Shelley M. Moffatt
Robin Chapman	Albert C. Friedman and Susan M. Tikalsky	Diane Kostecke and Nancy Ciezki	James D. and Patricia Moore
Elizabeth Chavez	Kay C. Gabriel	Douglas N. and Joan Kozel	Timothy S. and Asta Mulholland
Roshni Chowdhry	Rosemary E. Gall	Jennifer Kraemer	Bradley C. and Kelly Mullins
Constance S. and William H. Clune	Janet A. and Charles H. Gietzel	Harmony and Kerry Kronick	Mary Elizabeth Murray
Joan V. Collins and William J. Waldbillig	Give Lively Foundation, Inc.	Kuypers Family Fund	Andrea Musher
Community Foundation of Broward	Enid V. and Tyrone A. Glenn	Kwik Trip, Inc.	Virginia W. O'Brien
Johnston P. Connelly and Terri Connelly Cronk	Valy T. Goepfrich	Gloria J. Ladson-Billings and Charles F. Billings	William and Kathleen Owens
Jennifer S. and Timothy J. Conroy	Irwin A. and Robert D. Goodman Foundation, Inc.	Mary E. Laedtke	Vera N. Page
Jonathan D. Cooper and Jane M. Richard	Goodman's Jewelers	Susan W. and Donald Lauffer	Anthony J. and Tina M. Pelletter
Susan T. and Howard P. Cosgrove	Diane K. and Alan R. Greene	Andrew Laurent	Mark M. and Connie S. Pelton
George C. Cutlip	Connie and Wayne Grogan	Alan Lee and Margie Moeller	Lynn Persson and David Ward
	Therese Marie Gulbransen	Lisa Lehman	Estate of Sandra and Richard Pfahler

Evan F. and Jane S. Pizer  
Linda Poulsen-Suhr  
Martin and Lynn Preizler  
Leanne Puglielli  
Virginia Kay Ragatz  
Mary Ann and Richard A. Reale  
Jean E. Roberts and John E. Voegeli  
Celeste L. Robins  
Steven P. Robinson Family Fund  
Ellen and Michael Rosborough  
Dolores Sagami  
Saint Paul and Minnesota Foundation  
Catherine Sanders

Linda and Matt Sanders  
Leah Sandholm  
Jamie Sauer  
Sarah Schaettle  
Eleanor M. and Paul F. Schatz  
Estate of Dana Schreiber  
Jessica H. Schwantes  
George E. and Beth A. Scott  
Andreas Seeger  
Valerie Shatavsky  
Cynthia F. and David D. Shaw  
Brent Sieling and Megan Schliesman  
Matt Silvern and Kelly Cook

Rose C. Sime  
Ronald R. Sklansky  
Mary Lang Sollinger  
Carol L. and Paul D. Stang  
Sandra E. Stark  
Melba and Ralph Stockhausen  
John P. Stott and Patricia Sanford  
Robert R. and Mary E. Stroud  
Sharyn and Carl J. Stumpf  
Millard and Barbara B. Susman  
Myron and Margaret Talcott  
Linda D. Taplick and James W. Miller  
Victoria A. Topp

Jon G. and Susan Udell  
Madelyn Weiker  
Philip and Corinna Wells  
Sarah E. White  
Eric and Margaret Wilcots  
Katrin E. Wilde  
Sally Wilmeth and Terry F. Geurkink  
Estate if Barbra H. Winter  
Robert G. and Emily N. Wixson  
Noble L. and Michelle C. Wray  
Jim Young and Peggy Kratz  
Camille Zanoni  
Lawrence Zanoni and Cathy Cram

## Named Community Impact Funds

Jeff and Angela Bartell Community  
Impact Fund  
Bowles Family Fund  
Denis O. Carey and Carol Koby  
Carey Fund  
Megan E. Christiansen Fund  
Loree & Wynn Davies Family Fund  
Jane Eisner Community Impact Fund  
Founders Fund  
Boris and Terry Kiss Frank Community  
Impact Fund  
John and Mary Frautschi Fund  
Garver Memorial Unrestricted Fund

Charles and Janet Gietzel Fund  
Irwin A. and Robert D. Goodman Fund  
Anna Marie Graber Martens Fund  
Gruzner Family Fund  
Lyle Hill Unrestricted Fund  
Louis Hirsig Unrestricted Fund  
Whitford and Becky Huff  
Unrestricted Fund  
June E. Johnson Community  
Impact Fund  
Richard and Rosemary Johnson Fund  
Phil Kammerer Fund  
Phillip A. Levy Charitable Fund

Jean and Walter Meanwell  
Community Fund  
Stephen D. Morton Community  
Impact Fund  
Murphy Etzel Family Fund  
Edward F. Obert Unrestricted Fund  
John and Carolyn Peterson Fund  
Cleo and Glenn Sonnedecker  
Unrestricted Fund  
Michael Stieghorst and C. Sue  
Conley Fund  
Frederick C. Suhr Fund  
Robert W. Taplick Memorial  
Unrestricted Fund

Ann Tiemann Unrestricted  
Endowment Fund  
Natalie Tinkham Fund  
Robert and Dorothy Troller Community  
Impact Fund  
Widder Lowry Family Fund  
Anne and Martin Wolman  
Unrestricted Fund  
Doris Woychik Unrestricted Fund  
Louise Young Unrestricted  
Endowment Fund  
Ruth & Allen Zacharias Community  
Impact Fund

The \_\_\_\_\_ Fund for \_\_\_\_\_

Your Name

Your Cause

Create a named legacy, today or through your estate, to support what matters most to you — forever.

# 2025 Field of Interest Grants

MCF stewards approximately 70 Field of Interest funds, encompassing a wide range of focus areas chosen by donors. MCF staff facilitate grantmaking from these funds, based on the guidelines created by donors at the time each fund was created. In addition, MCF also has created Field of Interest funds that are broadly supported by donors. You can find a list and descriptions of MCF's Field of Interest Funds on our website at [madisongives.org/givenow](https://madisongives.org/givenow).

In 2025, MCF awarded nearly \$900,000 in grants from Field of Interest funds.

## Aging

- AgeBetter: Flip the Script on Aging Event – **\$1,500**
- IP Ministries: Memory Collectors Storytelling Project – **\$3,500**
- Lussier Community Education Center: Senior Brunch Program – **\$5,460**
- Madison Senior Center Foundation: Audio & Visual Upgrades for the Community Room – **\$15,000**
- Midwest Mujeres: Voices and Dreams Academy – **\$15,000**



## Arts & Culture

- American Players Theatre: Youth Focused Career Development – **\$10,000**
- ARTS for ALL Wisconsin: Friday Night Dance Party Program – **\$4,365**

- Capital City Theatre: Assassins Production – **\$25,000**
- City of Madison: The Wisconsin Mosaic by Arnold Zweerts (1918–2009) – **\$2,800**
- Dane Dances: Celebration of Cultures Programming – **\$5,000**
- Four Seasons Theatre: 2025–2026 Season Support – **\$55,000**
- Madison Contemporary Dance Company: Voices Collaboration Project – **\$5,000**
- Madison Youth Choirs: Tuition Assistance Program – **\$10,000**
- Maestro Productions: Ringing Badgers Handbell Ensemble – **\$2,500**
- Music Theatre of Madison: Trevor Production – **\$12,000**
- Opera for the Young: Family Opera Days – **\$15,000**
- Suzuki Strings of Madison: String Instrument Lessons – **\$8,000**
- TNW Ensemble Theatre: Time is Rhythm/Rhythm is Time – **\$7,900**
- Wisconsin Youth Symphony Orchestra: Music Makers – **\$8,000**



## Children & Youth

- Lighthouse Education Foundation: A Multilingual Model for Academic and Community Excellence – **\$15,000**
- Little Picassos: Art Enrichment Program for Underserved Children – **\$10,000**
- Madison Public Library Foundation: Expanding the Children's Dream Bus Program – **\$1,445**
- Natural Circles of Support: Summer Mentoring and Literacy Support for Students at East High School – **\$5,000**

- Neighborhood House Community Center: Neighborhood House Elementary Youth Programming – **\$10,000**
- Wil-Mar Community Center: Violence Prevention Through Movement – **\$5,000**

## Community Development

- Boys & Girls Clubs of Dane County: Abundant Life Christian School Emergency Recovery Fund – **\$5,000**
- Braille Library & Transcribing Services: Braille Lending Library – **\$2,500**
- Community Immigration Law Center: Legal Services – **\$25,000**
- Dane County Planning and Development: Dane County Regional Housing Strategy – **\$4,703**
- People Building Opportunity Through Grace and Action (PEBOGA): The HerStory Experience: “From Pain to Power” High School Girls Conference – **\$1,000**
- United Way of Dane County: Anticipated Impacts of Federal Policy Changes Review and Analysis – **\$4,000**



## Environment

- Heartland Farm Sanctuary: Heartland Permaculture Garden Project – **\$10,000**
- Midwest Environmental Advocates: Securing the Rights of Wisconsin Youth to Stable Climate – **\$14,000**
- University Houses Preschool: Compost Corner – **\$1,000**



## Essential Services

- Catalyst Project: Wellness Space Pilot – **\$8,000**
- Domestic Abuse Intervention Services (DAIS): Children in Shelter – **\$5,000**
- Felicia’s Donation Closet: Support for Delivery of Furniture & Housewares to Stable Homes – **\$4,000**
- Progress Center for Black Women’s Wellness: Satellite Programming at The Meadowlands – **\$8,000**
- Lutheran Social Services of Wisconsin and Upper Michigan: Off the Square Club Upgrades – **\$10,000**
- Madison Public Schools Foundation: Winter Gear Access for MMSD Students – **\$5,000**
- Sleep in Heavenly Peace: No Kids Sleep on the Floor in Our Town! WI-Madison Chapter 2025 – **\$5,000**
- The Village Diaper Bank: Dane County Diaper Gap – **\$5,000**
- UNIDOS Against Domestic Violence: Emergency Assistance Program – **\$4,000**
- Women’s Place and Resource Center: Purse with a Purpose Program – **\$3,500**

## Faith Communities

- Lake Edge Lutheran Church: Active Aging Upgrades for Safety and Accessibility – **\$23,000**
- Messiah Lutheran Church: Safe Transportation for Unhoused Students & Family Support – **\$21,825**

- Plymouth Congregational United Church of Christ: Personal Essentials Pantry, Atwood — **\$20,000**
- St. Patrick Catholic Church: St. Patrick Faith Formation Initiative — **\$24,950**
- St. Paul's Liberty Lutheran Church: Updating the Church's Community Message Board — **\$21,000**



## Food

- Community Action Coalition for South Central Wisconsin: Distribution of Resources to SNAP (FoodShare) Eligible Families — **\$25,000**
- Creekside Community School: Freezer for Food Storage to Expand School Food Pantry — **\$1,600**
- Focused Interruption: Madison Community Food Delivery Program — **\$5,000**
- Second Harvest Foodbank of Southern Wisconsin: Distribution of Resources to SNAP (FoodShare) Eligible Families — **\$25,000**
- WayForward Resources: Food Pantry Leadership Coalition — **\$5,000**

## Health & Vision

- Aravind Eye Foundation: Spectacles for Scholars — Pathway to Prosperity — **\$22,500**
- Combat Blindness International: Adaya Initiative Support Project — **\$75,000**
- VisionSpring: Unlocking Potential with Eyeglasses for Underserved Communities in India — **\$27,000**

## Learning

- Horizon High School of Madison: Computers for Horizon High School's 2025-2026 Academic Year — **\$1,800**
- House Urban Arts Initiative: Enhancing Youth Programming — **\$6,000**
- Madison Public Library Foundation: Systemwide Technology Improvement — **\$25,000**

## Miscellaneous

- Madison Public Library Foundation: Central Library Upgrades — **\$3,660**
- Henry Vilas Zoo: Giraffe Habitat Enhancement Project — **\$90,000**

## Nonprofit Capacity Building

- Wisconsin Philanthropy Network: Scholz Nonprofit Law, Federal Law Compliance — **\$7,000**



## Sports & Recreation

- Girls on the Run of South Central Wisconsin: Camp GOTR — **\$4,000**
- Sun Prairie Parks Friends: Wyndham Hills Pickleball Complex — **\$4,000**

## Unhoused

- America Red Cross — Wisconsin Region: Service to Armed Forces — **\$10,000**
- The Road Home Dane County: Employment and Education Fund — **\$7,000**

# A Fund for Women

A Fund for Women is an advised field of interest fund whose advisory committee recommends grants to support the women and girls of our community in reaching their full potential. Since its founding in 1993, AFFW has awarded 200 grants totaling \$2.5 million. In 2025, AFFW awarded \$146,000 to 13 organizations.

## AFFW 2025 Grants

### Centro Hispano

\$15,000 for Cultivating Wealth programming.

### Foundation for Dane County Parks

\$15,000 for Women in Natural Resource Management training.

### JustDane

\$10,000 for Just Bakery.

### Latino Academy of Workforce Development

\$10,000 for Latina Mentorship Program: Workforce Readiness.

### Literacy Network

\$10,000 for Empowering Women With English Skills.

### Madison Area Community Land Trust

\$10,000 for Building Stability: Post-Purchase Support.

### Meadowood Health Partnership

\$6,000 for General Operating Funds.

### Midwest Mujeres

\$5,000 for Voices and Dreams Academy.

### OutReach LGBTQ+ Community Center

\$10,000 for Interview Readiness mentoring and career coaching.

### The Playing Field

\$15,000 for Child Care Stabilization Initiative.

### UNIDOS Against Domestic Violence

\$15,000 for Stitching Hope: A Sewing Empowerment Program.

### Yada Project

\$15,000 for Economic Empowerment Program.

### YWCA Madison

\$10,000 for YWeb Career Academy.

## A Fund for Women Funds

A Fund for Women Grantmaking

Millie Baldwin/Hattie Bakke Fund for A Fund for Women

Diane Ballweg Women Soaring Above and Beyond Fund for A Fund for Women

Joyce J. Bartell Fund for A Fund for Women

Donna McDowell Beestman Fund for A Fund for Women

Julia M. Bolz Fund for A Fund for Women

Lewis & Mary Kay Brooks Family Fund for A Fund for Women

Julie L. Buss Fund for Women and Girls

Elizabeth M. Cantor Endowment for A Fund for Women

Carter/Rakentzes Fund for A Fund for Women

Ann Casey Fund for A Fund for Women

The Women of the Derilyn

Dean Cattelino Fund, Derilyn, Deborah and Beth

Joan Collins JoJo Fund to Support AFFW in honor of Grandchildren Sophia, Isabella, Caden & Christian

Megan Correll Family Fund for AFFW

Betty Harris Custer Fund for A Fund for Women

Nora Lee Moore-Davis Fund for A Fund for Women

The DoMa Strong Women Fund for A Fund for Women

Deirdre W. Garton Fund for A Fund for Women

Franklin H. Gietzel Fund for A Fund for Women

Janet Amundsen Gietzel Fund for A Fund for Women

Doris J. Hanson Fund for A Fund for Women

In Honor of Emilie Taylor Holmes Fund for A Fund for Women

Ava Louise King Fund for A Fund for Women

The MacKenzie Women's Fund for A Fund for Women

In Memory of Sylvia Melli-Jacobs Fund for A Fund for Women

Josephine Musser Fund for A Fund for Women

Melany Stinson Newby Fund for A Fund for Women

Richard & Peggy Parfitt Fund for A Fund For Women

Proud Mary Fund for A Fund for Women

Judy Schwaemle Fund for A Fund for Women

Mary Ellyn Drury Sensenbrenner Fund for A Fund for Women

Dr. Beverly S. Simone Fund for A Fund for Women

Jo Ann Six Fund for A Fund for Women

Niki and Muffy Sollinger Fund for A Fund for Women

Muriel Strickland / Teresita Barroquillo Fund for A Fund for Women

Esther Hougen and Martha Taylor Fund for A Fund for Women

Helen S. Wendel Fund for A Fund for Women

Samantha M. Weston & Cheryl Rosen Weston Fund for A Fund for Women

Anne Wolman Fund for A Fund for Women

Women's Club of Madison Fund for A Fund for Women

Women Who Roar Fund for A Fund for Women

Marie A. Wunsch Fund for A Fund for Women

# Strengthening Nonprofit Leadership and Developing Connections

For the Irwin A. and Robert D. Goodman Nonprofit Center, 2025 fulfilled a long-term vision of MCF. Director Andy Davey and Community Impact Coordinator Jazzmine Haygood worked to create a space of learning, research and relationship building.

In September, the Goodman Nonprofit Center launched its first major program: the Goodman Nonprofit Fellowship. Designed for current nonprofit executive directors, the Fellowship responds to a clear need in the nonprofit sector for practical, high-quality, affordable leadership development.

This 10-month program focuses on the real challenges of running a mission-driven organization and allows Fellows to not only learn from the session facilitators, but also from each other.

“The Fellowship Program has been a deeply grounding and empowering experience for me as a nonprofit leader,” said Rachael Maysels, executive director of FairShare CSA Coalition. “I’ve been incredibly grateful for the chance to receive formal, thoughtful training and have already begun applying many of the tools and resources.”

Staff of the Nonprofit Center also have been out in the community, sharing knowledge as panel participants, presenting community programs and learning with, and from, the nonprofit community.

You can find more information about the Nonprofit Center and its work at [gnpc.org](https://gnpc.org).



*Goodman Nonprofit Center Advisors Council:  
Front row: Amy Washbush, Jody Bartnick, Sharon Lezberg  
Back row: Scott Haumersen, Eugenia Podestá, Jim Welsh,  
E.G. Schramka*



## Thank You Founding Partners

In addition to a Founding Partner gift from an anonymous donor, these organizations have joined MCF in supporting the work of the Goodman Nonprofit Center with gifts of \$1 million or more to the Nonprofit Center’s endowment.

The Nonprofit Center’s endowment had total commitments of \$11.3 million at the end of 2025. To meet current programming aspirations will require a \$12.5 million endowment, or an additional \$1.2 million above current commitments. We welcome all levels of support and invite you to learn more about the Goodman Nonprofit Center at [gnpc.org](https://gnpc.org).

Irwin A. and Robert D. Goodman Foundation

American Family Dreams Foundation

Ascendium Education Group

Roots & Wings Foundation

United Way of Dane County

# Giving Partner Funds

Regional giving partners are entities dedicated to strengthening and supporting their communities. They partner with MCF for efficiency and expertise, which allows them to focus their attention on raising resources and advising grants. Each giving partner is represented by an advisory committee of local residents.

If you'd like to learn more about the work MCF's giving partners are doing, visit [madisongives.org/partners](https://madisongives.org/partners).



*The Columbus Area Endowment Advisory Committee awarded grants to 13 organizations in 2025.*

## Columbus Area Endowment & Affiliate Funds

CAE enhances the vitality of the Columbus area. In 2025, CAE awarded 13 grants to area organizations, including Friends of the Columbus Public Library.

- Columbus Area Endowment
- Columbus Area Endowment Passthrough Fund
- Columbus Area Aquatic Center Fund
- Columbus Fall River Rotary Club "Good Works" Fund
- Columbus School District Endowment
- Columbus School District Passthrough Fund
- Conlin Family Fund
- Parry F. Lueders Fund
- Mary & John Roche Fund
- Alice Schmidt Fund for Professional Development
- Sharrow Family Fund



*Lodi Girls & Boys Wrestling used a grant from LACE to buy new mats.*

## Lodi Area Community Endowment & Affiliate Funds

LACE is proud to support projects that make Lodi a vibrant community. In 2025, LACE awarded 12 grants to organizations including Lodi Girls and Boys Wrestling.

- Lodi Area Community Endowment
- Lodi Area Community Passthrough Fund
- Amelia Heider Memorial Scholarship Fund
- Dr. Wallace G. & Elizabeth O. Irwin Scholarship Fund
- Kenneth J. Johnson and Eleanor D Johnson Scholarship
- Duane M. and Marilyn H. Kirking Lodi High School Scholarship
- Kozel Scholarship for Lodi High School
- Reppen Scholarship for Lodi High School
- Harold & Lois Ryan Scholarship for Lodi High School
- Larry and Judy Wieland Scholarship
- Albin C. Wopat Memorial Scholarship



*The Monona Fund awarded a grant to the Harry Whitehorse International Wood Sculpture Festival in 2025.*

## The Monona Fund

The Monona Fund helps support the community of Monona by backing charitable causes with vast outreach. It awarded grants to two organizations in 2025 that help strengthen the community.

- The Monona Fund
- The Monona Fund Passthrough



Students at Central Midwest Ballet Academy practice on the new barres made possible by a grant from the Middleton Endowment.

## Middleton Endowment & Affiliate Funds

ME enhances the quality of life in the Middleton area for current and future generations. In 2025, they awarded 12 grants, including one to the Central Midwest Ballet Academy.

- Middleton Endowment
- Middleton Endowment-Environment, Social and Governance Fund (ESG Fund)
- Middleton Community Passthrough Fund
- Marlette E. Larsen Family Fund
- Middleton Area Public Lands Endowment (MAPLE) Fund
- Standard Imaging Foundation Fund



The Rio Foundation Advisory Committee awarded six grants to local organizations in 2025.



The PACF Advisory Committee awarded a grant to support the historic Indian Agency House in Portage.

## Portage Area Community Fund & Affiliate Funds

PACF's vision is that Portage and the surrounding area will continue to build on its history by embracing the future. In 2025, the Advisory Committee awarded two grants, including one to Portage's historic Indian Agency House.

- Portage Area Community Fund
- Portage Area Community Fund Passthrough
- Marion and W.J. "Dietz" Eulberg Scholarship
- Leifheit Giving Fund
- The James and Alice Richardson Scholarship Fund
- Saving Lives Everyday Fund

## Rio Community Foundation & Affiliate Funds

RCF is dedicated to preserving and enhancing the quality of life for people of all ages in Rio. It encourages support for education, agriculture and community development, and awarded six grants in 2025.

- Rio Community Fund
- Rio Community Foundation - Agricultural Fund
- Rio Community Foundation - Athletics Fund
- Biddle Family Agricultural Scholarship Fund for Rio
- Biddle Family Scholarship Fund for Rio
- Rio Community Foundation - General Education Fund
- Rio Community Foundation - Library Fund
- Strmiska Fund for the Rio Community

# Finance and Operations

In a year of stock market uncertainty and volatility, MCF remained faithful to its long-term investment focus and perpetual stewardship horizon.

Patience is a fundamental element of a successful long-term investment strategy. Navigating volatility by maintaining discipline, sustaining broad diversification across multiple asset classes and applying tactical adjustments are best practices that have served MCF well through numerous market ups and downs in its 80+ year history.

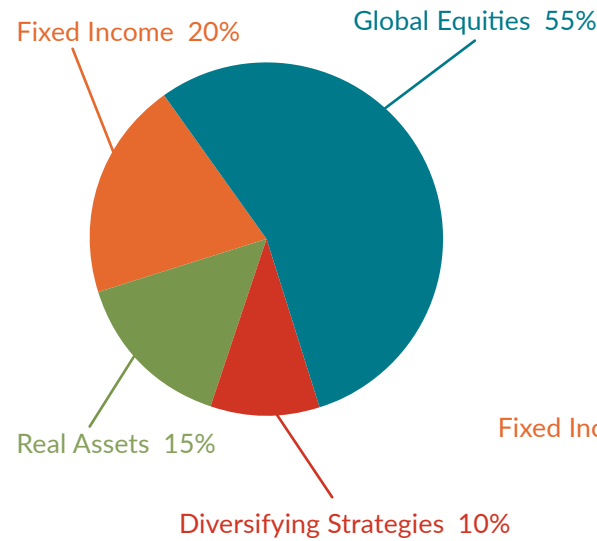
Today, MCF's permanent endowment portfolios — diversified and ESG — together hold more than 1,300 funds, including 42 new funds opened in 2025. This is a reflection of the trust donors continue to place in the foundation and its investment model.

In 2025, MCF portfolios struggled against their benchmarks (see the table below). However, after thorough review of its investment strategy, MCF believes its investment stewardship will prove resilient.

## Target Asset Allocations

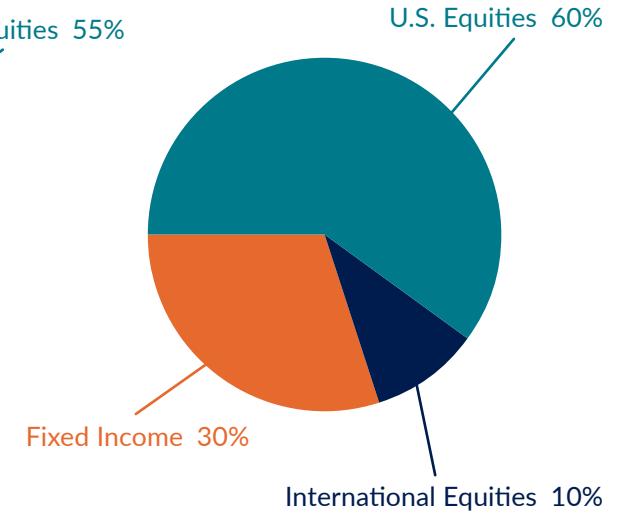
### Diversified Endowment Fund Portfolio

(Managed by Commonfund/OCIO)



### Environmental, Social and Governance Endowment Fund Portfolio

(Managed by Boston Trust Walden)



## Investment Performance as of 12/31/25

All returns shown are annualized.

	1 YEAR	3 YEAR	5 YEAR	10 YEAR	15 YEAR
<b>Diversified Portfolio</b>	<b>13.5%</b>	<b>11.3%</b>	<b>8.6%</b>	<b>9.1%</b>	<b>7.6%</b>
<i>Benchmark</i>	15.1%	11.6%	7.6%	8.7%	7.2%
<b>ESG Portfolio</b>	<b>13.6%</b>	<b>11.1%</b>	<b>7.1%</b>	<b>8.9%</b>	<b>8.6%</b>
<i>Benchmark</i>	15.7%	16.5%	9.2%	10.1%	9.7%

ASSETS	DEC. 31, 2025	DEC. 31, 2024
Cash and cash equivalents	\$ 37,197,039	\$ 35,200,631
Certificates of deposit	8,459,744	5,502,000
Contributions receivable	1,250,000	2,500,000
Note receivable	210,123	202,507
Prepaid expenses	57,513	23,427
Beneficial interest in charitable lead annuity trust	234,334	322,613
Property, furnishings and equipment, net	171,470	114,566
Operating lease right-of-use asset	1,352,254	1,515,745
Other assets	-	1,573,733
Investments	479,902,057	413,053,853
<b>Total Assets</b>	<b>528,834,534</b>	<b>460,009,075</b>

LIABILITIES		
Gift annuity liability	1,146,333	1,163,135
Funds held for other organizations	45,792,784	38,586,441
Grant commitments	717,500	630,000
Operating lease liability	1,444,263	1,580,560
Other liabilities	433,833	409,674
<b>Total Liabilities</b>	<b>49,534,713</b>	<b>42,369,810</b>

NET ASSETS		
Net assets without donor restrictions	477,815,487	414,816,652
Net assets with donor restrictions	1,484,334	2,822,613
<b>Total Net Assets</b>	<b>479,299,821</b>	<b>417,639,265</b>

<b>TOTAL LIABILITIES AND NET ASSETS</b>	<b>\$ 528,834,534</b>	<b>\$ 460,009,075</b>
---	-----------------------	-----------------------

REVENUE, GAINS & OTHER SUPPORT	2025	2024
Contributions	\$ 38,562,032	\$ 41,295,675
Investment income (loss)	57,753,379	37,403,786
Administrative fees from funds held for others	334,942	303,231
<b>Total Revenue, Gains &amp; Other Support</b>	<b>96,650,353</b>	<b>79,002,692</b>

EXPENSES		
Grants	31,638,626	20,695,722
Personnel	2,350,905	2,121,768
Professional development	38,765	43,377
Office facilities and equipment	294,533	199,712
Office operations	158,969	175,717
Professional fees and dues	286,673	265,540
Communications and marketing	149,099	150,079
Meetings, events and travel	72,228	97,297
<b>Total Expenses</b>	<b>34,989,798</b>	<b>23,749,212</b>

CHANGE IN NET ASSETS		
Net assets at beginning of year	417,639,265	362,385,785
Net assets at end of year	479,299,821	417,639,265
<b>Total Change in Net Assets</b>	<b>\$ 61,660,556</b>	<b>\$ 55,253,480</b>

The 2025 and 2024 Consolidated Statements of Financial Position and Consolidated Statements of Activities are being audited by Baker Tilly US, LLP. Copies of the complete report will be available at the Madison Community Foundation office or online at [www.madisongives.org](http://www.madisongives.org).

Madison Community Foundation complies with all applicable state and federal reporting requirements.

# Leaving a Legacy for the Future

Legacy giving allows you to extend the impact of your giving far beyond your lifetime, ensuring continued support for the organizations and causes you value. People can leave a legacy through MCF in many ways: making a gift through their will or trust, creating a charitable gift annuity, or naming MCF as the beneficiary of their life insurance or retirement plan.

In 2025, we were honored to receive legacy gifts from the following people:

**Jane Ayer**, whose legacy supports prairie restoration, youth arts and A Fund for Women, while helping sustain the Oakwood Chamber Players — ensuring both Wisconsin’s natural landscapes and Madison’s vibrant arts community continue to flourish.

**Bob Gersbach**, whose legacy fund supports a wide range of organizations he cared deeply about, from hospice care and youth programs to public media and conservation.

**Sylvia and Truman Graf**, whose gift strengthens the community they loved through support for MCF’s Priority Fund and the Attic Angel Association, which works to improve the quality of life for older adults.

**James Lamal**, whose legacy supports the Isabel Conway Lamal Scholarship, providing annual funding to Our Lady of the Lake Elementary School to strengthen curriculum development and enrich learning opportunities for students.

**Dick and Sandy Pfahler**, whose legacy gift supports a wide range of organizations, from conservation and youth development to animal welfare, health care, cycling advocacy, and science education.

**Dana Schreiber**, whose legacy gift supports MCF’s Priority Fund, helping meet the community’s most pressing needs, and the Urban League of Greater Madison’s Single Family Home Ownership Program, expanding pathways to stability and generational wealth through homeownership.



*John Shillinglaw’s legacy gift will support prairie restoration.*

**John Shillinglaw**, who created the Mekan Prairie Fund to support prairie and savanna restoration across Wisconsin to protect rare ecosystems and enhancing habitat for species such as the endangered Karner blue butterfly.

**Mary & John Storer**, who used charitable gift annuities to support the Madison Symphony Orchestra’s endowment so that live symphonic music will continue to inspire our community for generations.

**Robert and Lucille Westervelt**, whose legacy gift to the Bob and Lucille Westervelt Fund strengthens their family’s tradition of generosity and supporting charitable causes for generations to come.

## Legacy Society Members & Charitable Gift Annuity Holders

Anonymous (54)

Tina Abert

Henry A. Anderson, M.D.

Allen Arntsen and  
Elizabeth Erickson

Bill Arthur

Robert Auerbach

George E. Austin and

Martha Vukelich-Austin

Baer Family Futures Fund

Kathy Bailey

Brenda Baker  
and Dean Gore

Helen A. Bakke

Helen H. Baldwin

Diane Ballweg

Christopher and  
Christine Barden

Jim and Barb Barnard

Jeff and Angela Bartell

Lois Bartels

Barwick Humanity Fund

Chuck Bauer and  
Chuck Beckwith

Susan J.M. and  
Ellis Bauman

Donna M. Beestman

Susan Behrens and  
David Look

Hugh and Joyce Bell

Jan Berg

Laura Berger

Donna Blankenbaker and  
Cynthia Streich

Linda H. Bochert

Thomas and Shaila Bolger

Daniel and  
Stacey Bormann

Dean and Ann Bowles

Ann C. Boyer

Todd and Jerilyn Bramson

Joseph A. and Barbara  
J. Braunger

Robert and  
Mary Brennan

William A. and  
Treva C. Breuch

Michael K. Bridgeman

JoAnn Bucaida

Joel F. Burbach Fund

Jim\* and Cathie Burgess

Mary P. Burke

Buster Brown and Friends

Bradley Campbell

Denis O. Carey and Carol  
Koby Carey

Ann Casey

Martha L. and  
Charles P.\* Casey

Peter and Amy Cavi

John and Rose Clark

Gayle R. Cody

Coe/Frazier Family  
Foundation

Jane Taylor Coleman

Joan V. Collins	Douglas Gurak and Mary Kritz	Mary E. Krall	Jacob and Brenda Miller	Barbara Roeber and Larry Black	Brett and Susan Topham
Joe and Betty* Conlin	Terry L. Haller	Glenn R. Krieg	Regina M. Millner	Bird Ross and Tom Loeser	Judi Trampf and Katy Heyning
Jennifer Seeker Conroy and Tim Conroy	Dr. Beth Hankins	David and Cynthia Krivanek	Steven and Meryl Mixtacki	Frederic and Mary Ross	J. James Tye and Gabriel Fonseca Neves
Joan Creitz	Rodger Hansen	Doug La Follette	Mel Morgenbesser	Karen and Harry Roth	Jon and Susan Udell
James R. and Karel A. Cripe	Don and Mary Harkness	Marilyn Lampman	Stefanie Moritz and Vince Jenkins	Robert and Jacqui Sakowski	Richard and Carol* Valley
Kate Cronin	Eileen Harrington and Nadya Aswad	Mary Jane Langer	Ellen Murdoch	Katrina Louise Sanyal	Martin and Karen Voss
Anthony D'Alessandro and Alison Tenbruggenate	Robert C. Hawkinson	Jeanine S. Larson	Regina Murphy and Mark Etzel	Eve B. Scheffenacker	Andrija and Hazel K. Vukmir
Loree* and Wynn Davies	Ron and Carol* Hay	Rob Latousek and Brian McCormick	Daniel and Joyce Muxfeld	Barbara Schley	Marian C. Walluks
Angela R. Davis	Mark P. and Melinda V. Heinritz	Joan LeMahieu	Brennan Nardi	Laurel Schmidt	Guy Webster
Mary Beth Davis	Duane Hendrickson	Beth and Rich Lepping	Helene Nelson and James Arts	Orange and Dean* Schroeder	Weigandt Family Fund
Bill and Jan DeAtley	Herlitzka Family Fund	Pat and Peter* Lipton	Allan and Aileen Nettleton	Joseph and Mary Ellyn Sensenbrenner	Amanda White
Gordon and Gail Derzon	Michael Hertting	Scott and Karen Lockard	Diane Mertens and Larry Neuman	Patrick and Helen Sheahan	Ron and Carolyn White Fund
John and Lois Doty	Phillip and Ginger Hinderaker	Phyllis A. Lovrien	Neumueller Family Fund	Rudy* and Janet Silbaugh	Sarah E. White
Marty Drapkin and Erica Napoli	Linda and John Hughes	Anne Lucke	Robert and Gina Newell	Geraldine E. Sinnard Memorial Fund	William F. White
Jane Eisner	William and Anne Hunnex	Lisa Kristine Luedtke	Tom and Deb Obrodovich	JoAnn Six	Mark and Jeanne Whitish
Daniel and Natalie Erdman	Don Hunt and Kathleen Engel-Hunt	Peter and Jill Lundberg	Warren and Nancy Onken	Ronald R. Smith and Paulette Walker Smith	Don B. Wichert
Elaine Erickson- Hollander and Dr. Jeffrey Hollander	Bradley L. Hutter	William G. Lunney and Judie M. Pfeifer	Amy T. and Jonathan L. Overby	Guy and Eileen B. Somers	Tripp and Nancy Widder
Escher Family Fund	Gregory and Patricia Iaccarino	Rich and Mary Lynch	Ismael and Stacy Ozanne	Bob and Lisa Sorge	Bill and Brenda Wilcox
Karen Faster	Anne Iwata	Alexander Lynne Living Trust	Ronald* and Patricia Paska	Sarah Shatz and Claire Strader	Sally Wilmeth and Terry Guerink
Carol J. Ferguson	Monica A. Jaehning and William Thomas Schrader	Douglas and Norma Madsen	Paul Patenaude	Alan J. Strohschein	Jenifer Winiger
Daniel B. Fields	Nicole Jenkins	Daniel and Linda Marquardt	Judy and Dan Peterson	Martha Sullivan	Joel and Carol Wish
Ariel Y. Hicklin Ford	Barbara Johnson	Bruce and Michelle Marsh	Reynold V. Peterson	Don Cleasby and Kevin Sweeney	Kathleen Woit, Ph.D.
Grant Frautschi	Bobbie Johnson	Paul Marunich and Ruth Ann Schoer	Cynthia R. Poe	Martha A. Taylor	Ann B. and Robert L. Wolfe
Susan M. Gaard	Ronald J. and Rosemary* L. Johnson	Hal and Christy Mayer	Ginny Ragatz	Cheri Teal	Carla Wright
Jac and Edye Garner	Carol Jordan	Jennifer and Jeff McFarland	Dean* and Sheila Read	Howard Teal	Dr. Marie Wunsch
Delight Gartlein	Mark and Sarah Kaufman	Nancy A. McGill	Donna Read	Donna and Chet Thomas	Nancy F. Young
Roberta Gassman and Lester Pines	Erica and Ralph Kauten	Cary and Brenda McNatt	Earl H. and Elnor A Reichel	William J.* and Shirley J. Tierney	Ruth and Allen Zacharias
Charles and Janet Gietzel	Michael Kelley	Ron Mensink	Dave and Kim Reinecke	William F. Tierney and Valerie Nehls	Camille Zanoni
Enid Glenn	Rowan and Kiran Kennedy	Sharifa S. Merchant	David* and Terri Reis	Susan Tikalsky and Albert Friedman	Larry Zanoni
Mary T. Grace	Darcy and Tom Kobinsky	Cathy and Ralph Middlecamp	Gordon* and Janet Renschler		
Therese Marie Gulbransen	David and Elizabeth Koehler		Raymond T. Riddle		
David M. Gunderson and Sandra J. Gunderson	Karen A. Kohls		Fred and Nancy Risser		
			Mary and John Roche		

\*Deceased

# Advised, Designated, Field of Interest, Nonprofit and Scholarship Funds

Anonymous (28)	Allen Arntsen and Elizabeth Erickson Charitable Fund	Bek-Gran/Hovind Children's Fund	Madison Museum of Contemporary Art
100 Black Men of Madison Scholarship Fund	Arts Access Fund for use of the Overture Center for the Arts	Hugh & Joyce Bell Family Fund	Madison Opera
Academy of Breastfeeding Medicine Founders Endowment Fund	ARTS for ALL Wisconsin Fund	Bell Laboratories, Inc. Fund	Madison Symphony Orchestra
African American Ethnic Academy Red Balloon Fund	Attic Angel Association Fund	Belleville Public Library Fund	MATC Foundation
Agrace HospiceCare Endowment Fund	Ayer Enrichment Fund	The Benches Fund	Olbrich Gardens
Aldo Leopold Foundation Future Leaders Endowment	Badger Rock Neighborhood Center Endowment	Benson Family Fund	Salvation Army of Dane County
Aldo Leopold Nature Center Endowment Fund	Baer Family Futures Fund	Berbee Derby Technology Education Fund	Tenney Nursery and Parent Center
Altrusa Fund	Diane Ballweg Boys & Girls Clubs of Dane County Education Endowment	Tyler J. Berg Memorial Scholarship Fund	Wisconsin Youth Symphony Orchestra
American Family Insurance Co. Fund	Diane Ballweg Performance Fund for Madison Youth Choirs	Al and Dana Iin Bernstein Endowment Fund	Adolph C. and Eugenie M. Bolz Family Fund
American Girl Fund for Overture Center	Baraboo Range Preservation Association Endowment	Al and Dana Iin Bernstein Fund	Julia M. Bolz Fund for the Goodman Nonprofit Center
American Players Theatre Fund	Maurice and Cecilia Barnard Scholarship Fund	Matthew Berry Endowment Fund	Daniel and Stacey Bormann Family Fund
Ronni Jones APT Children's Fund	Bartell Community Theatre Endowment	Charles D. Bert Fund for the Elderly	Bouchard Family Fund
Ms. Milele Chikasa Anana Scholarship	Bartell Theatre Passthrough Fund	Beyond the Page Fund	Boys and Girls Club of Dane County Fund
Anbu Fund	Jeff and Angela Bartell Charitable Fund	Bicycle Federation of Wisconsin Endowment Fund	Boys & Girls Club of Dane County McKenzie Regional Workforce Center Endowment
Amos and Marcia Anderson Fund	Bartels Family Fund	Big Brothers/Big Sisters Foundation Fund	Bradley Family Fund
Bob and Pat Anderson Fund	Bartlett Family Fund	Black Earth Public Library Endowment Fund	Marcia Bradley Advised Fund
The Dick, Jill and Newman Anderson Charitable Fund	Dr. Bill Bartlett Sports Medicine Fund	Black Point Preservation Fund	Todd & Jerilyn Bramson Family Fund
Henry A. Anderson III Fund	Tommy Bartlett Medical Research Fund	Blake Family Fund	Brandt Advised Fund
Morris Andrews Memorial Endowment	Chuck Bauer & Chuck Beckwith Fund	Steve and Beth Blakeslee Family Foundation	Paul Brandt School Forest Endowment Fund
Morris Andrews Memorial Scholarship Fund	Susan and Ellis Bauman Fund	Rebecca Blank and Hanns Kuttner Fund	Brat Fest, Inc.
Angel's Wish Endowment Fund for Animals	Walter Bauman Mental Health Fund	Terese Allen & Jim Block Fund	David Braun Dane County Humane Society Fund
James and Marilou Angevine Fund	Bayside Fund	The Bloom Women Fund	Keani Braxton Black Excellence Music Scholarship
George M. Anglin Memorial Fund	Bayview Foundation Endowment	Bolger Family Fund for WYSO	Breakfast Optimist Foundation of Madison Fund
Robert P. Annen Educational Scholarship Fund	Darrell Bazzell Fund	Bolick Family Endowment	Breunig-Paska Fund
Antoniewicz-Taylor Family Fund	The Beachley Fund	Tasha E. Bolton Scholarship Fund	Briarpatch Youth Services Fund
Arnol Family Fund for the Badger Prairie Needs Network	Dave and Terri Beck-Engel Scholarship Fund	<b>Bolz Family Endowment Funds</b>	Dean and Becky Bridge Fund
Arnol Family Gift Fund	Paul and Kathleen Beckett Passthrough Fund	Boys and Girls Club of Dane County	Brooks-Rockenbach Fund for Literacy Network
	Florence M. Behrens Campership Fund	Gathering Waters Conservancy	
		Glaciers Edge Council of Boy Scouts of America	
		Grace Episcopal Church	

Brooks-Rockenbach Fund for Restoring Hope Transplant House

The Brosnan and Flessas Family Fund

Frederick Brumm Fund for Agrace Hospicecare

Frederick Brumm Fund for Dane County Humane Society

Buck's Green Light Scholarship Fund for MATC

Buck's Green Light Scholarship Fund for UW-System

Jane Burrows Buffett Endowment for Omega School

Jane Burrows Buffett Scholars Program Endowment

Jim and Cathie Burgess Family Fund

Joan and Dale Burke Fund

Mary P. Burke Education Fund

Mary P. Burke Fund for Girls & Women

Colleen Burns Memorial Fund

Business Forum Foundation Fund

Brian Butler and Carolyn Lazar Butler Endowment Fund

Dr. Frank & Cindy Byrne Donor Advised Fund

Dr. Frank & Cindy Byrne Passthrough Fund

Cheryl Cady Memorial Fund for DAIS

Major Bennie L. Canty Scholarship

Capital K9s Endowment Fund

Capital Springs Endowment Fund

Carpenter Family Endowment

Carpenter Family Fund

Martha and Charles Casey Fund

Centers for Prevention & Intervention Fund

Central Wisconsin Center Education Fund

Centro Hispano of Dane County Passthrough Fund

Centro Hispano of Dane County Technology Fund

Rick Chandler & Heidi Pankoke Fund

Charitable Gift Fund

Lau & Bea Christensen Charitable Fund

Craig and Karen Christianson Fund

Phillip W. Chritton International Studies Scholarship

Laura E. Chritton & William E. Chritton Scholarship Fund

Clean Lakes Alliance - Frozen Assets Fund

**Clean Wisconsin Funds**

- Clean Wisconsin Environmental Legacy Fund
- Clean Wisconsin Environmental Litigation Fund
- Clean Wisconsin Strategic Initiatives Fund

Kevin Cleary Foundation

Coe Family Advised Fund

Carol Cohen Fund

Marcus and Sheila Cohen Advised Fund

Cory Ryan Cole Memorial Fund for DAIS

Jane Taylor Coleman Fund

Joan V. Collins Fund

Columbus High School Class of '65 Scholarship

Combat Blindness International Fund

Common Wealth Development Fund

Community Action Coalition Anti-Poverty Fund

Community Living Connections, Inc. Endowment Fund

Community Restorative Justice Endowment

Community Restorative Justice Fund

Community Shares of Wisconsin Endowment Fund

Conley Family Fund

Owen Connolly & Harold Sundberg Memorial Fund

Veryl Courtier Evansville Scholarship Fund



## Dick Wagner Memorial Fund

Dick Wagner was a pioneer and early leader for gay rights in Wisconsin. He worked for the State of Wisconsin for 33 years and was the first openly gay member elected to the Dane County Board of Supervisors, where he served from 1980 to 1994. He also was instrumental in the creation of the Fair Wisconsin Education Fund, Wisconsin's only statewide LGBTQ+ advocacy organization.

So, when Fair Wisconsin's Board of Directors started an endowment fund to ensure the organization's long-term stability, it was only natural to name the fund after him.

"Dick was such an important part of Fair Wisconsin's past," said Abigail Swetz, Executive Director of Fair Wisconsin, "now he can be part of our future as well."

The endowment fund was started with a large donation from a board member who wanted to help sustain the organization long into the future. And although the fund is new, it is already having an impact. "Because I know this endowment exists, it makes the present a little easier. It alleviates some of the pressure, knowing that this future is more secure," Swetz said. "Fair Wisconsin has always focused on bringing people together from throughout Wisconsin to build a strong coalition and take action. Dick Wagner believed strongly in the need to bring people together, and it is still a light that guides our work."

# New Funds Created in 2025

Anonymous (3)  
William J. Arthur Endowment Fund  
Aspen Fund  
George H. & Shirley C. Austin  
Fund for the Environment  
George H. & Shirley C. Austin  
Fund for Learning  
M. Jane Ayer Fund for  
A Fund for Women  
M. Jane Ayer Fund for  
Holy Wisdom Monastery  
Prairie Restoration  
M. Jane Ayer Fund for  
Madison Youth Arts Center  
M. Jane Ayer Fund for Sauk Prairie  
Conservation Alliance  
Ben Balgord Memorial Scholarship  
Chris and Marian Barnes Fund  
James G. Berbee Community Fund  
Boys & Girls Clubs of Dane County  
AVID/TOPS Fund  
The Camille Fund  
Sherry & Doug Caves Fund  
Celebrate Children Fund  
Angela R. Davis  
Community Impact Fund  
Sylvia and Truman Graf Fund  
Greiling Family Fund  
Huggett Giving Fund  
Linda & John Hughes  
Passthrough Fund  
Linda & John Hughes Fund  
Norma and Doug Madsen  
Community Impact Fund  
Mary Ann Mandeville Fund  
Claire and Menahem Mansoor  
Family Fund  
Mead Family Fund  
Mecan Prairie Fund  
MPSF Leopold  
Community Assistance Fund  
Amy T. and Dr. Jonathan L.  
Overby Fund for Dane County  
Humane Society  
Reynold V. Peterson Arts Fund  
Dick and Sandy Pfahler  
Giving Fund  
Liese Pfeifer Giving Fund  
Sergenian's Floor Coverings  
Foundation  
Shelter Friends Endowment Fund  
Shelter Friends Fund  
Soaring Corvus Fund  
John Tubbs Giving Fund  
Dick Wagner Memorial Fund  
WYSO Building  
Operations Endowment  
Wopat Family Fund

Maria del Rosario Covarrubias  
Educational Opportunity Fund  
Cream City Charities Passthrough Fund  
Cream City Fund  
Create Wisconsin's Future Fund  
CTM Productions Endowment Fund  
Nancy Thurow Memorial  
Endowment for CTM  
CUNA Mutual Group Fund  
Ron and Dorothy Daggett  
Endowment Fund  
Stuart Daily Seeds of Learning Fund  
Anthony D'Alessandro & Alison  
Tenbruggencate Odyssey Health Care  
Scholarship Fund  
Dane County 4-H Leaders'  
Association, Inc.  
Dane County Bicycle Association Fund  
Dane County Cultural Affairs  
Commission Fund  
Dane County Fair Youth Foundation  
Endowment Fund  
Dane County Farmer's Market  
Scholarship Fund  
Dane County Humane Society  
Endowment Fund  
Dane County K-9 Fund  
Dane County Youth Fund  
Elizabeth C. Davies Fund for Family and  
Child Development  
Andrew & Beverly Davison Fund for  
Disadvantaged Children & Youth  
DeAtley Family Foundation  
Deerfield Community Center  
Endowment Fund  
DeForest Area Public  
Library Endowment  
Raymond and Eunice Devine Fund  
David and Sue Diericks Fund  
Doug and Kathy Dittmann Fund  
Herb and Dottie Dittmann Fund

Charlotte Dixon Scholarship  
The Donata Fund  
Donley Family Fund  
Victor and Carol Dorn Family Fund  
Downtown Madison Fund  
Driftless Area Land  
Conservancy Endowment  
Dugout Club  
Eagle School Fund  
Lorna Quarles Fox Memorial Fund for  
Eagle School  
Eagle-Vanguard Swimming Fund  
Earth Science Women's  
Network Endowment  
Easter Seals Wisconsin Fund  
Herbert & Eunice Eberhardt Family Fund  
**Ecumenical Housing Corporation Funds**  
Ecumenical Fund for Faith  
Communities  
Ecumenical Fund for Nutrition  
Ecumenical Fund for Seniors  
Ecumenical Fund for the Homeless  
E.D. Locke Public Library -  
McFarland Endowment  
Educational Foundation of the  
Albany Community  
Effigy Tree Maintenance Endowment  
James Eisner Fund  
Jane Eisner Giving Fund  
Jane Eisner Fund  
Mark Elsdon & Erica Liu Fund  
EMCC Woody Carey Scholarship  
Awards Fund  
Paul and Janet Emmerich Advised Fund  
Marie Endres Fund  
Enhancement for the Elderly  
Daniel W. Erdman Advised Fund  
Erdman Holdings, Inc. Fund  
Marshall Erdman Advised Fund

Marshall Erdman Fund  
 Erik's Kids Day Fund  
 Erickson Family Fund  
 Fund to Support the Jeffrey Clay Erlanger Civility In Public Discourse Award  
 Passthrough Fund to Support the Jeffrey Clay Erlanger Civility in Public Discourse Award  
 Alice Craig Erney Designated Fund  
 Escher Family Fund  
 Bill and Barb Escher Fund  
 Evjue Foundation Great Performance Endowment Fund  
 Family Service Fund  
 Karen Faster Passthrough Fund  
 Bev Fergus Family Fund  
 Beverly Fergus Scholarship Fund  
 Fergus Family Fund  
 Firemen's Park Endowment Fund  
 The First Tee Allan Mitchell Endowment Fund  
 Fitchburg Public Library Endowment Fund  
 Fitchburg Splash Pad Endowment Fund  
 Stephen Fleischman Distinguished Lecture Fund for MMoCA  
 Erica and Tony Fleming Fund for Boys & Girls Club of Dane County  
 Folklore Village Endowment Fund  
 For the Kingdom Fund  
 Alex Fortney Scholarship  
 Forward Theater Company Endowment (L)  
 Betty Franklin-Hammonds Memorial Scholarship Fund  
 Bradley J. Franz Scholarship Fund  
 John J. Frautschi Charitable Fund  
 Walter and Dorothy Jones Frautschi Fund  
 Friends of Aztalan State Park Interpretive Center Fund

Friends of Crime Response  
 Friends of Dane County Parks Endowment Fund  
 Friends of Donald Park Endowment Fund  
 Friends of Hoyt Park  
 Friends of Monona Terrace Community and Convention Center Fund  
 Friends of MSCR Endowment Fund  
 Friends of Pheasant Branch Conservancy Glen and Joan Pulver Education Endowment  
 Friends of Pheasant Branch Conservancy Restoration Fund  
 Friends of Schumacher Farm Park Endowment Fund  
 Friends of STARS Endowment Fund  
 Friends of the UW Odyssey Project  
 Friends of Yahara House Endowment Fund  
 Belle and Clayton Frink Fund  
 Frink Passthrough Fund  
 Fund for Black Women's Wellness  
 Fund for the Conservation & Preservation of Sid Boyum Sculptures  
 Galanter Family Fund  
 Rosemary Garfoot Public Library Endowment  
 Garner Family Fund  
 Roberta Gassman and Lester Pines Family Fund  
 Andy Gauss Memorial Scholarship  
 Eugene and Barbara Gehl Fund for Porchlight, Inc.  
 Arnold G. and Jean E. Gehner Youth Services Fund  
 Robert R. Gersbach Fund  
 George and Candy Gialamas Fund  
 Mildred Gill Opera Fund  
 Girl Scouts Courage, Confidence, and Character Scholarship

Girl Scouts of Wisconsin - Badgerland Council, Inc.  
 Giving Tree Fund  
 Sherry and Al Goldstein Endowment Fund  
 Al Goldstein Passthrough Fund  
 Goodman Community Center Endowment Fund  
 Irwin A. and Robert D. Goodman Nonprofit Center Fund  
 Gooze Family Endowment Fund  
 David Blaine Gray Memorial Fund  
 Jim Green Memorial Fund for Monona Grove School District  
 Greischar Brown Tzedakah Fund  
 Sandra Grieger-Block Fund for Clean Lakes Alliance  
 Carol Ann Grogan Memorial Scholarship  
**Groundswell Conservancy Funds**  
 Groundswell Conservancy Bolz Gift Endowment  
 Groundswell Conservancy Easement Endowment Fund  
 Groundswell Conservancy Match Endowment  
 Fritz Gunkel Memorial Scholarship Fund for West High School  
 Habitat for Humanity of Dane County Endowment Fund  
 Burt Hable Memorial Scholarship Fund  
 Habush Habush & Rottier Charitable Fund  
 Haine/Fricano Family Fund  
 Haller Fund  
 Hancock Center for Movement Arts and Therapies  
 Harlan Philip Hanson Scholarship Fund  
 Thomas L. and Linda J. Hanson Charitable Fund  
 Thomas Hardin Scholarship Fund  
 Don & Mary Harkness Fund

Harlequin Fund  
 Richard & Barbara Harper Fund for Wisconsin Chamber Orchestra  
 Harr/Huggett Scholarship Fund  
 Patricia Nichols Harrington Family Fund  
 Bob Harris Memorial Community Recreation Fund  
 Bob Harris Middle School Sports Fund  
 Charles Hathaway Trust  
 Roger and Ann Hauck Advised Fund  
 Hay Family Fund  
 Cindy and Gary Heberling Fund  
 Heiner Family Fund  
 Tim and Jana Heinrich Family Fund  
 Vernon Hellenbrand Memorial Scholarship Fund  
 Virginia and Perry Henderson Advised Fund  
**Henry Vilas Zoo Funds**  
 Henry Vilas Zoo Endowment  
 Henry Vilas Zoo Passthrough Fund (Unrestricted)  
 Entrance Redesign Fund for the Henry Vilas Zoo  
 Fund to Enhance Accessibility of the Henry Vilas Zoo  
 Passthrough Fund for Education, Conservation, Animal Welfare & Capital Projects at Henry Vilas Zoo  
 Herlitzka Family Fund  
 Herman Family YEGB Fund  
 Charles M. Himel Fund  
 Phillip and Ginger Hinderaker Fund  
 Historic Madison, Inc. Endowment Fund  
 John P. Hobbins Family Fund for Badger Chapter, American Red Cross  
 John P. Hobbins Fund for Hillcrest Baptist Church  
 Ho-Chunk Nation - Madison Area Endowment Fund

Hodan Community Services,  
Inc. Endowment

Catherine Esther Hokin Memorial  
Scholarship Fund

Roger and Vivian Holten Band  
Scholarship Fund

**Roy Hopko Endowment Funds**

Christ Presbyterian  
McClelland Foundation  
Zor Shrine

Brian Howell Life Sciences  
Scholarship Fund

Lydie Hudson Scholarship Fund

Linda & John Hughes Giving Fund

Frances Huntley-Cooper Scholarship  
Endowed Fund

Husch Blackwell Charitable Fund

Dave and Marcia Hyzer Fund

Peter Iannone West High Memorial  
Scholarship Fund

Ice Age Trail Alliance Endowment

The Ideal Builders Fund

Ideal Builders / Jennifer Schneider-  
Crubaugh Scholarship

Iltis Family Fund

International Crane Foundation  
Endowment Fund

IRB Fund

Anne Iwata and Darren Stucker Fund

Anne Iwata and Darren Stucker Fund for  
Music Education

Jaya G. Iyer Endowment Fund

Jamie's Hearts and Stars Fund

John Janty Memorial Scholarship

Janus Galleries Fund

Gordon and Beverly Jenkins Fund

Jenni and Kyle Fund

Bob Joers Family Memorial Scholarship

**John A. Johnson Field of Interest Funds**

Fund for Arts and Culture

Fund for Community Development

Fund for the Environment

**John A. Johnson Scholarship Funds**

Beloit College

Edgewood College

Luther College

Madison Country Day School

MATC

Milwaukee School of Engineering

Ripon College

Robert G. and Betty H. Johnson Fund

Robert and Shirley-Dawn  
Jorgenson Fund

Junior League of Madison  
Endowment Fund

JustDane Changing Lives, Changing the  
Community Fund

JustDane Social Justice Fund

JustDane Returning Citizen's Career  
Support Fund

Kanopy Dance Endowment Fund

Kanopy Dance Endowment Fund  
(Jefcoate)

Karch Family Fund

Kary Fund for Children

Katrina's Kids Day Fund

Leslie Katzman Memorial Fund

Shirley Jane Kaub Fund

Mark and Sarah Kaufman Family Fund

Frederick "Fritz" Charles Kaump  
Scholarship for Memorial High School

Arlan and Lori Kay Advised Fund

Kennedy Heights Technology  
Center Fund

Charles Loufek Kimport Memorial  
Scholarship Fund

Kevin King Realtors® Association  
Charitable Fund

Marilyn H. and Duane M. Kirking Harlan  
High School Scholarship

Knipp Poulter Designated Fund

Kobinsky Family Giving Fund

Kohls and Erdmann Family Fund

Koppa Family Fund

Lauren Kosovec Memorial Scholarship

Edward and Sylvia Kovic Memorial Fund

Kevin Kowalczyk Memorial Scholarship  
Endowment Fund

Roelof and Wilma Kraak Family Fund

Roelof & Wilma Kraak Family Fund for  
Marshall Scholarship

Kraemer Library & Community Center  
Endowment Fund

William Kraus and Toni Sikes Women  
Artists Forward Fund

Glenn Krieg Fund

Mary M. Kritz and Douglas T.  
Gurak Fund

Harold and Theodora Kubly Field of  
Interest Fund

R. Kubly Family Foundation  
Passthrough Fund

Shirley Kubly Fund for Henry Vilas Zoo

Theodora H. Kubly Fund

Kuntz Family Fund

Kunz Family Fund

Capt. John "Hans" F. Kurth  
Memorial Fund

Kurtz Family Fund

Kuypers Family Fund

La Follette High School Aspire  
Scholarship

Doug LaFollette Environmental Speakers  
Series Endowment

Lakeland Oaks Fund

Isabel Conway Lamal Scholarship Fund

Helen Minch Landkamer & Elaine Minch  
Mahony Scholarship Fund

Howard and Judith Landsman  
Passthrough Fund

Robert and Marie Laux Memorial Fund

David and Mary Lawson Passthrough Fund

Leadership Legacy Fund

LeBrun Family Foundation

Leck Memorial Fund

Alan Lee and Margie Moeller  
Family Fund

Rosemary Lee Fund for Civic  
Engagement at Madison Public Library

LeMahieu Family Fund

Betty Lemon Fund

Sherry and Roger Lepage Giving Fund

Rich and Beth Lepping Fund

Lesli Ann's Kindness Fund

Lesli Ann's Scholarship Award Fund

**Steven A. Levine Endowment Funds**

Steven A. Levine Fund for the Arts

Steven A. Levine Fund for the  
Environment

Steven A. Levine Fund for Law,  
Business and Finance

Stu Levitan Fund

Philip & Elizabeth Lewis  
Family Park Fund

LGM Alumni Association  
Endowment Fund

Caroline & Jim Liedtke Fund for  
Racial Justice

Tim Lightner Fund

Garrison L. Lincoln Scholarship Fund

Literacy Network Computer  
Lab Endowment

Literacy Network Fund

Arthur and Susan Lloyd Advised Fund

Lothe Family Charitable Fund

Phyllis A. Lovrien Passthrough Fund

Anne Lucke Fund

Peter & Jill Lundberg Fund

Bill Lunney and Judie Pfeifer Family Fund  
for Parks, Trails and Natural Resources

Lussier Community Education Center  
Children's Program Endowment Fund

Lussier Fund for the Evjue School Forest

Lussier Fund for Madison Community  
Foundation

Lussier Teen Center Endowment Fund

LVM Dreams Big Endowment Fund

John Lyle Memorial Trust

Lynch Family Fund

Lynch Family Maximum Giving Fund

Nancy and Dennis Lynch Fund

M-Pro Outdoor Passthrough Fund

M-Pro Outdoor Endowment Fund

Mad City Ventures Fund

Madison Fund

Madison Area Arts Coalition Fund

Madison Area Rehabilitation Centers, Inc.  
Endowment Fund

Madison Ballet Endowment Fund

Madison Children's Museum Fund

Madison Children's Museum Fund (L)

Madison Children's Museum Fund for  
the Future

Madison Civics Club Fund

Madison Civics Club By Youth/For Youth  
Project Fund

Madison Museum of Contemporary Art  
Endowment Fund

Madison Museum of Contemporary Art -  
Art Purchase Fund

Madison Music Fund

Madison Opera Fund

Madison Parks Foundation Fund

Madison Public Libraries Fund

**Madison Public Library  
Foundation Funds**

Madison Public Library Foundation  
Endowment Fund

Madison Public Library  
Passthrough Fund

Alicia Ashman Library Endowment

Central Library Endowment

Hawthorne Branch Endowment

Lakeview Branch Endowment

Meadowridge Branch Endowment

Monroe Street Branch Endowment

Pinney Branch Endowment

Print Books Purchase Fund

Professional Development Endowment

Sequoia Branch Endowment

South Madison Branch Endowment

Madison Reading Project Fund

Madison Savoyards Ltd.  
Endowment Fund

**Madison School & Community  
Recreation Funds**

MSCR Adaptive Sports & Fitness Fund

MSCR Pontoon Boat Endowment Fund

MSCR Pontoon Boat  
Passthrough Fund

Madison Senior Center Fund

Madison Symphony Orchestra Inc. Fund

Madison Symphony Orchestra Fund

Madison Theatre Guild Endowment Fund

Madison Trust for Historic Preservation

Madison West Class of 1947  
Scholarship Fund

Madison West Class of 1952 Ann Stanke  
Arts and Humanities Scholarship Fund

Madison West Middleton Rotary  
Foundation, Inc. Endowment

Madison Youth Arts Center Endowment

Madison Youth Arts Center -  
Campaign Fund

**Madison Youth Choirs Funds**

Madison Children's Choir Legacy Fund

Madison Youth Choirs Endowment Fund

Carrel Pray Madison Boy Choir Alumni  
Endowment Fund



## Wisconsin Chamber Orchestra

Reaching over 250,000 people through music annually and known for Concerts on the Square and its Residence status at Overture Center for the Arts, the Wisconsin Chamber Orchestra (WCO) launched an ambitious five-year recording project called *Music Landscapes in Color* in 2023, which is supported in part by a grant from MCF.

CONVERGENCE is the second installment of this initiative. Performed and recorded in October 2024 in Overture's Capitol Theater, CONVERGENCE encapsulates the spirit of *Musical Landscapes in Color*. How does music, written and presented today, reflect, inspire and influence our culture and move us to build a stronger, connected society? CONVERGENCE brought together powerful works by leading composers of our time, offering audiences an evening that explored unity, identity and connection through music.

The WCO is a proud MCF fund holder.

### **From left to right (foreground):**

Composers Andre Myers, Michael Abels, Patrice Rushen, & Wisconsin Chamber Orchestra Music Director Andrew Sewell

### **Background:**

Musicians of the Wisconsin Chamber Orchestra

### **Performance:**

*Convergence*, October 10, 2024 | Capitol Theater at Overture Center for the Arts

### **Photo taken by:**

Audra Lange, Director of Marketing, WCO



## Mecan Prairie Fund

The Mecan Prairie Fund was established through the estate of John Shillinglaw in 2025. During his lifetime, John was a passionate environmentalist and conservationist and dedicated many hours to the protection and restoration of the Mecan Prairie in Waushara County. John's Mecan Prairie Fund through MCF supports efforts to preserve prairie and savanna environments across Wisconsin, ensuring healthy ecosystems and enhancing habitat for the endangered Karner blue butterfly.

H. Madsen Fund  
 Norma and Doug Madsen Giving Fund  
 Madsen Post-Secondary  
 Scholarship Fund  
 Magic Penny Fund  
 Malawian Orphans Fund  
 Mally Fund for Aging Education  
 Raymond and Virginia Malmquist Fund  
 for the American Red Cross

### **Mann Educational Opportunity Funds**

Mann Educational Opportunity Fund  
 Mann Educational Opportunity  
 Passthrough  
 Mann Educational Opportunity Fund  
 Passthrough - Restricted

David Charles & Heather Lyn Mann  
 Family Foundation  
 Claire and Menahem Mansoor Family  
 Advised Fund  
 MAP Scholarship Fund  
 Margaret's Fund: A Northside  
 Scholarship Fund  
 Margie's Music for Life Fund  
 Joel Marino Memorial Scholarship  
 Bruce W. and Ruth M. Marion Fund  
 Trevor R. Marsh Memorial  
 Endowment Fund  
 Trevor R. Marsh Memorial  
 Passthrough Fund  
 Marshall Community Library  
 Endowment Fund  
 Matt 25 Fund  
 Len Mattioli Family Fund  
 Helen and Jeffrey Mattox Family  
 Passthrough Fund  
 Mayer Family Fund  
 Hal Mayer Family Advised Fund  
 Mazess Fund for the Environment  
 Mazess Giving Fund  
 Marie S. McCabe Fund

James and Joan McCarthy Family  
 Foundation Fund  
 Gordon and Janet McChesney Fund  
 Nancy McGill Fund for the Red Cross in  
 Dane County  
 Joan McGucken Riggs Fund for  
 Children's Arts  
 Joan McGucken Riggs Fund for  
 Community Health  
 McKenna Family Fund  
 John and Jo Ellen McKenzie  
 Advised Fund  
 Michael Harrington McKinney  
 Scholarship Endowment  
 Michael McLain Fund  
 McNall Family Passthrough Fund  
 Cary and Brenda McNatt Giving Fund  
 Gary & Lynn Mecklenburg  
 Passthrough Fund  
 Meissen, Brown and Dunn Family  
 Giving Fund  
 Memorial High School Athletic  
 Alumni Fund  
 Mendota Rowing Club Fund  
 Ron Mensink Fund  
 Meriter Foundation Fund  
 Meyer Family Fund  
 Jim and Margaret Alm Meyer  
 Endowment Fund  
 Jim and Margaret Alm Meyer  
 Passthrough Fund  
 Micah 6:8 Fund  
 John Middlecamp Memorial Fund  
 Cathy and Ralph Middlecamp Fund  
**Middleton Cross Plains Area School  
 District Foundation Funds**  
 Ashley Family Scholarship  
 MCPASD Education Foundation Fund  
 MCPASD Endowment for MHS  
 Caring Closet  
 Middleton Future Scholars Endowment

## Madison Public Schools Foundation Endowments for the Benefit of...

Allis Elementary School  
 Anana Elementary School  
 Badger Rock Middle School  
 Black Hawk Middle School;  
 Capital High School  
 Chavez Elementary School  
 Cherokee Middle School  
 Crestwood Elementary School  
 East High School  
 Elvehjem Elementary School  
 Emerson Elementary School  
 Franklin Elementary School  
 Gompers Elementary School

Hamilton Middle School  
 Hawthorne Elementary School  
 Henderson Elementary School  
 Huegel Elementary School  
 Jefferson Middle School  
 Kennedy Elementary School  
 La Follette High School  
 Lake View Elementary School  
 Lapham Elementary School  
 Leopold Elementary School  
 Lindbergh Elementary School  
 Lowell Elementary School  
 Marquette Elementary School

Mendota Elementary School  
 Midvale-Lincoln Elementary School  
 Muir Elementary School  
 Nuestro Mundo School  
 O'Keeffe Middle School  
 Olson Elementary School  
 Orchard Ridge Elementary  
 Phillips High School  
 Randall Elementary School  
 Sandburg Elementary School  
 Schenk Elementary School  
 Sennett Middle School  
 Shabazz High School

Sherman Middle School  
 Shorewood Hills Elementary School  
 Spring Harbor Middle School  
 Stephens Elementary School  
 Thoreau Elementary School  
 Toki Middle School  
 Van Hise Elementary School  
 West High School  
 Whitehorse Middle School  
 Wright Middle School

## Madison Public Schools Foundation Endowments...

Altwegg Scholarship Endowment  
 Kathy Bartell Fund for  
 Music Endowment  
 Shirley Baum Student  
 Achievement Endowment  
 Donald and Alice Benn Fund for the  
 Benefit of MPSF Endowment  
 East High School Booster  
 Club Endowment  
 Barbara Ritchie Flanagan Endowment  
 Shelley Glover Athletic Endowment  
 Gould/Dickinson Pottery Endowment  
 Don and Dana Hafeman Memorial  
 Scholarship Endowment  
 Susan A. Hamblin Social Studies Field  
 Trip Endowment  
 Dr. Russell Hess/GHC Emergency  
 Medical Endowment  
 Homeless Education Endowment

Professor Al Hovland Tennis  
 Scholarship Endowment  
 Immigrant Families Endowment  
 Lee Ann Kleeman Memorial Visual Arts  
 Scholarship Endowment  
 La Follette Marketing and Business  
 Department Endowment  
 La Follette Printmaking Endowment  
 Howard and Judith Landsman Fund for  
 MPSF Endowment  
 Madison Public Schools  
 Foundation Endowment  
 Barbara E. and Gerald  
 Marwell Endowment  
 Mary J. McClellan Elementary School  
 Music Endowment  
 Karen Meissen Scholarship Endowment  
 MMSD High School Girls and Boys  
 Sports Equity Endowment  
 MMSD Library Endowment

MMSD Social Work  
 Emergency Endowment  
 Mohs Music Endowment  
 Kathy Mosher Fund for Madison East  
 High School Endowment  
 Music Endowment  
 Arthur C. and Charlene B. Nelson  
 Memorial Scholarship Endowment  
 Douglas and Patricia Ritchie  
 Memorial Endowment  
 Carrie Macklin Ritz and Peter Ritz MPSF  
 Fund Endowment  
 Len Rush Principal Professional  
 Development Endowment  
 Brendan M Scanlon Memorial Art  
 Grant Endowment  
 Schiavoni-Sturm Enrichment Fund for  
 Benefit MPSF  
 School Forest Endowment  
 Sennett Middle School Environmental  
 Education Endowment

Marlys Sloup-Dale Wortley Reading  
 Recovery Scholarship Endowment  
 La Follette High School Storch  
 Family Endowment  
 Brent and Matt Vidulich Memorial  
 Scholarship Endowment  
 Benjamin Durley Webster Memorial  
 Scholarship Endowment  
 Barbara Nemetz Weigner  
 Scholarship Endowment  
 West High School Business and  
 Marketing Department  
 West High School Visual  
 Arts Endowment  
 Kim Wing/Yoke Ping Chin  
 Commemorative Scholarship  
 Wozniak/Dickinson Visual  
 Arts Endowment  
 James C. Wright Scholarship Endowment  
 Nicole Zanoni - Health Endowment



## Celebrate Children Foundation

The Celebrate Children Foundation strives to ensure that every child in Wisconsin grows up in a safe, stable and nurturing environment. The Foundation partners with the Wisconsin Child Abuse and Neglect Prevention Board to provide evidence-based prevention programs and services as well as to engage in research to develop innovative approaches.

These programs and services focus on primary prevention, a strategy that seeks to address the root causes of child abuse and neglect before it occurs. Celebrate Children Foundation promotes that the most effective and compassionate strategy to ensure the well-being of children is to strengthen and support families.

In 2025, Celebrate Children Foundation started an endowment fund at MCF to support its long-term sustainability so it will be able to strengthen families and prevent child abuse and neglect across Wisconsin for generations to come.

Middleton High School Scholarships of MCPASDEF  
 Mighty Middleton Scholarship  
 Middleton Public Library Endowment Fund  
 Middleton Public Library Large Print Collections Fund  
 Middleton Senior Center Endowment  
 Midwest Environmental Advocates Endowment Fund  
 Midwest Charitable Passthrough Fund  
 Midwest Family Charitable Trust  
 FW Mielcarek Memorial Scholarship  
 MIG Legacy Foundation  
 Leone Milfred Memorial Scholarship  
 Beth A. Miller Memorial Fund  
 Catherine C. and Reinold G. Miller Fund  
 Jack Miller Memorial Fund  
 Mandy M. and Paul E. Miller Foundation  
 Robert E. Miller and Pamela J. Hoffman Fund  
 Millner/Speichinger Family Fund  
 Elaine and Nicholas Mischler Family Fund  
 Mixtacki Family Fund  
 MNA Arts Initiative Endowment Fund  
 Mohaupt Fund for the Sequoia Branch Library

**Monona Grove Education Foundation Funds**

Monona Grove Education Foundation Fund  
 Endowment for Cottage Grove Elementary  
 Endowment for Glacial Drumlin School  
 Endowment for Monona Grove High School  
 Endowment for Taylor Prairie School  
 Endowment for Winnequah School  
 Monona Library Book for Life Fund

Monona Public Library Foundation, Inc. Fund  
 Monona Terrace Community Programs Endowment Fund  
 Monona United Methodist Church Fund  
 Monroe Romolino Family Arts Fund for Barneveld High School  
 Montello Endowment for Education  
 Montello Endowment for Education Passthrough Fund  
 Elizabeth Moon Proctor Scholarship  
 Julius Morgan and Verona L. Morgan Scholarship  
 Mel Morgenbesser Fund  
 Stephen D. Morton Fund for Morton Forest  
 Stephen D. Morton Passthrough Fund for Morton Forest  
 Mt. Horeb Area School Alumni Endowment Fund  
 Keith and Harriett Moyer Fund  
 Aiden Mueller Memorial Fund  
 Centro Hispano: Peter and Pam Munoz Fund  
 Lisa Munro Two Generation Scholarship Fund  
 Ellen Murdoch Advised Fund  
 NAAB Talent Development Fund  
 NAMI Dane County Endowment Fund  
 The Neighborhoods Fund  
 George and Judith Nelson Advised Fund  
 Nelson Carlson Reisdorf Hodgson Miller Fund  
 Neumueller Family Fund  
 NewBridge Madison Older Adult Endowment Fund  
 New Harvest Foundation Endowment Fund  
 Lonnie Nofzinger Endowment supporting Dimensions in Sound & The Studio Orchestra

No Stomach For Cancer Endowment  
 Novotny Scholarship Fund for East High School  
 Novotny Scholarship Fund for Random Lake High School  
 Nurses' Fund of Wisconsin  
 Obrodovich Family Endowment  
 Obrodovich Fund for Feed our Rural Kids, Inc. (FORK)  
 Obrodovich Fund for Vilas Food Pantry  
 Harry W. Ogden, Jr. Memorial Scholarship Fund  
 Olbrich Botanical Society Fund  
 Judy P. Olson Book Discussion Kit Fund  
 One City Early Learning Centers Endowment Fund  
 Opera for the Young Fund  
 Operation Fresh Start Endowment Fund  
 Opitz Family Fund  
 Opportunity 2020 Fund  
 Options in Community Living, Inc. Endowment Fund  
 Orange's Fund for the Arts  
 Centro Hispano: Barbara Oreel Fund  
 Oregon Area Historical Society Endowment  
 Oregon Parks Fund  
 Oregon Public Library Fund  
 Max Osswald Homeless Children's Library Endowment  
 George and Constance Ott Fund for St. Dunstan's Episcopal Church  
 Ouellette Family Advised Fund  
 Amy T. and Dr. Jonathan L. Overby Fund  
 Amy Overby Endowment to Support Wisconsin's Tribute to Dr. Martin Luther King Jr.

**Overture Center**

Overture Center Endowment Fund  
 Endowment Fund for Theater in Overture Center  
 Friends of the Overture Center Fund

Padgham Scholarship Fund  
 The PAL Fund  
 Parent Share Acorn Fund  
 Parents Advocating Student Success - CKCS Endowment  
 Hazel B. Paschall Scholarship Fund  
 Gretchen Patey Charitable Fund  
 Terrance and Judith Paul Family Fund  
 Rita O'Reilly Paulus Family Fund  
 PBJ Family Fund  
 Betty Jane Perego Fund  
 Betty Jane Perego Fund for Multicultural Youth Programs  
 Perry Persike Youth Scholarship Fund  
 Persson Ward Giving Fund  
 Jim & Maggie Peterman Fund  
 Marion and Donald E. Peterson Fund for Domestic Abuse  
 Donald E. and Marion Peterson Fund for Kids  
 Judy and Dan Peterson Donor Advised Fund  
 Orville & Geraldine Peterson Family Trust Fund  
 Planned Parenthood Fund  
 The Playing Field Endowment  
 James and Peggy Possin Passthrough Fund  
 Preschool of the Arts Endowment Fund  
 Priebe Family Fund  
 ProAssurance/PIC Wisconsin Employee Trust Endowment Fund  
 The Progressive Endowment Fund  
 Pugh Children Fund  
 Carl and Theresa Pulvermacher Endowment Fund  
 Marie B. and Clifford Pulvermacher Endowed Scholarship Fund  
 QuARE Endowment Fund  
 Harold A. and Marian E. Rafter Fund

John A. Rafter Scholarship  
 Ragatz Family Endowment Fund  
 Melanie G. Ramey Charitable Fund  
 Steven Ramig Fund  
 Richard and Lorraine Ranney Fund  
 Rape Crisis Center, Inc. Endowment Fund  
 Rather-Tews All You Need Is Love Fund  
 Read-To-Go Bookies Philanthropic Fund  
 Red Balloon Children's Fund in honor of Oscar G. Mayer  
 Oliver and Genevieve Redsten Red Balloon Fund  
 Regent Pride Scholarship  
 Dave and Kim Reinecke Advised Fund  
 RENEW Wisconsin EAP Internship Endowment Fund  
 Renfert Family Fund  
 Blaine and Kim Renfert Family Passthrough Fund  
 Rhinelander-Taylor Centennial Fund  
 Dee Richard Memorial Fund  
 Riddle Family Charitable Fund  
 William and Gretchen Rieser Advised Fund  
 Matilda Ripley Loving Trust Fund  
 RISE Wisconsin Endowment Fund  
 Risser Family Foundation  
 River Valley School District Endowment  
 The Road Home Housing and Hope Forever Fund  
 The Road Home Passthrough Fund  
 Lenee and Jay Robaidek Family Fund  
 Steven P. Robinson Family Fund  
 John and Cindy Rogerson Fund

**Rooted Wisconsin**

Rooted WI Fund  
 New Gardens Passthrough Fund  
 Judy Rose Scholarship Fund

Maurice Rosefelt Memorial Fund  
 Maurice Rosefelt Scholarship Fund  
 Gil Rosenberg Endowment Fund  
 Ross Family Charitable Fund  
 Dr. Harry and Karen Roth Passthrough Fund

**Pleasant Rowland Great Performance Campaign Endowments**

Great Performance Fund for Theater  
 CTM Madison Family Theater  
 Madison Ballet  
 Madison Children's Museum  
 Madison Museum of Contemporary Art  
 Madison Opera  
 Madison Symphony Orchestra  
 Wisconsin Academy  
 Wisconsin Chamber Orchestra  
 Tony Farina Fund for RSVP of Dane County Inc.  
 Rudy Family Fund For Edgewood High School  
 Ruhly Family Fund  
 Arnold N. Rusky Community Fund  
 Harold and Donna Sabot Giving Fund  
 SAIL Fund  
 Saint Catherine of Siena Tuition Grant Endowment  
 Sales and Marketing Executives of Madison Fund  
 Saloutos Family Fund  
 Salvation Army of Dane County Haven of Hope Fund  
 Donald and Janaan Sampson Fund  
 Roberto G. Sánchez Educational Opportunity Fund  
 Sánchez Scholarship Passthrough Fund  
 Patricia Sanford and John Stott Fund  
 Charles and Peggy Sanna Endowment Fund

Michael J. Schaller Scholarship Fund  
Marian E. and Stephen E. Schleck Youth Fund  
Hannah E. Schmidley Charitable Fund  
Scholz Family Fund  
Rodney Schreiner and Mark Blank Gift Fund  
Schreiner Luttrell Bugle American Fund  
Paul and Lynne Schulte Family Fund  
Paul and Lynne Schulte Family Passthrough Fund  
Dale and Beverly Schultz Giving Fund  
Schwandt Family Fund  
Schwandt Family Scholarship Fund  
Scott Family Gift Fund  
Ajaya K. Sharma Memorial Fund  
Patrick and Conor Shea Fund for Dyslexic Children  
Michael Sheahan Memorial Scholarship for Vel Phillips High School  
Sheehan Park Endowment Fund  
Terry & Sandy Shockley Fund  
Shorewood Community School Fund  
Jack D. Siebert Memorial Future Educators Scholarship Fund  
Ellen and Paul Simenstad Fund for Madison Symphony Orchestra  
Jo Ann Six Fund  
John and Carmen Skilton Advised Fund  
Donald and Joanne Slama Charitable Fund  
Randy R. Sluder Memorial Fund  
Roland A. and Nancy Emmons Smith Advised Fund  
Ronald R. Smith and Paulette Walker Smith Environmental Fund  
Harold M. Smout Scholarship  
Bella Sobah Memorial Endowment for Social Justice

Society of St. Vincent de Paul District Council of Madison Fund  
BHP Billiton Fund for the Sokaogon  
Sokaogon Chippewa Community Education Passthrough Fund  
Sorge Family Fund  
Bob Sorge Fund for Wisconsin Chamber Orchestra  
Southern Forested Hillside of Indian Lake Park  
Spectrum Brands Holdings, Inc. Fund  
Tom Stamstad Memorial Fund  
Stark Family Fund  
David & Marcie Stark Family Fund  
Statue of Liberty Replica Restoration Endowment Fund  
Step Fund  
Joseph T. Steuer and Jamie G. Steuer Fund for Madison Community Foundation  
Vicki Stewart Artists Endowment Fund for Theater in Overture Center  
Don and Mary Stirling Passthrough Fund  
Peter Stirling Trust Passthrough Fund  
Mary Stoffel Fund  
Strang, Inc. Endowment Fund  
Strings, It's Elementary Fund  
Teddy O. & Robert R. Studt PlayTime Productions  
Sugar Creek Elementary School Endowment  
Summit Credit Union Money Smarts Fund  
Sun Prairie Soccer Club Program and Maintenance Fund  
Supporting Black Futures Endowment  
Swan Tull Family Charitable Fund  
Swank Family Fund  
Louis Swedarsky Scholarship Fund  
Carolyn L. Taylor Scholarship Fund  
Hathaway Terry Advised Fund

Terry Family Charitable Passthrough Fund  
John & Jean Tews Fund for Early Education  
Paul and Clara Thompson Passthrough Fund  
Jennifer Thompson Fund  
Thoreau Elementary PTO Legacy Fund  
Three Gaits Spirit of Sam  
Tikalsky-Friedman Family Fund  
Tikalsky-Friedman Family Passthrough Fund  
TNW Ensemble Theater, Inc. Endowment  
Topitzes Family Passthrough Fund  
John and Carol Toussaint Fund  
John and Carol Toussaint Overture Concert Organ Fund  
Robert and Dorothy Troller Fund for Madison Youth Arts Center  
Troy Boys Fund  
Deborah and Patrick Turski Family Fund  
John Tuschen Poet Laureate Memorial Fund  
Jon and Susan Udell Fund  
Jon and Susan Udell Gift Fund  
United Cerebral Palsy of Greater Dane County, Inc.  
United Way of Dane County Foundation Fund  
Urban League of Greater Madison Workforce Innovation Fund  
Urban League of Greater Madison Youth Endowment Fund  
Urban Triage Endowment (Agency)  
UW Credit Union Community Giving Fund  
UW Credit Union Community Giving PT Fund  
Paul van Delst Memorial Fund  
Van Haren Family Fund  
VASD Partners Actively Learning (PALs) Scholarship Fund

Christopher Vasquez Memorial Scholarship Fund  
Verona Area Community Theater Endowment  
Verona Public Library Endowment Fund  
Betty von Rutenberg Memorial Scholarship Fund  
Francis and Catherine Wagner Early Childhood Fund  
Marvin A. and Grace D. Wagner Fund  
John L. Walker Fund  
Walker Family Fund for Music  
William E. and Edna B. Walker Fund for the Elderly  
Marian C. Walluks Fund  
Warner Park Swimming Pool Fund  
Centro Hispano: William & Joyce Wartmann Fund  
William J. Wartmann Fund for OutReach, Inc.  
Wartmann Endowment for Silverwood Park  
Waunakee Library Forever Fund  
WayForward Resources Endowment  
D+T Webb Advised Endowment Fund  
David and Susan Weigandt Family Fund  
Karl W. and Mary Janet Wellensiek Advised Fund  
Al Welling Memorial Scholarship Endowment Fund  
Harvey and Bonnie Wendel Charitable Fund  
West Family Fund  
Bob and Lucille Westervelt Fund  
Linda Weyenberg Fund for Neighborhood House  
Ron and Carolyn White Fund for Music  
Whitish Family Fund  
Whitish Family Giving Fund  
Widder Family Fund  
Dann and Jean Willett Fund

Roger and Kristi Williams Fund  
 Wil-Mar Neighborhood Center Fund  
 Pat Wilmeth Onward Odyssey Scholarship  
 Sally Wilmeth and Terry Geurkink Family Fund  
 Necy and Wayne Wilson Music Scholarship Fund  
 Robert J. and Vera Wilson Endowment Fund  
 Wingra School Tuition Assistance Fund  
 Dr. Margaret C. Winston Fund  
 Squires Winston Fund  
 Barbra H. Winter Advised Fund  
 Wisconsin Arts Education Association Endowment Fund  
 Wisconsin Center for Environmental Education  
 WCATY Endowment Fund  
 Wisconsin Chamber Orchestra Endowment Fund  
 Wisconsin Chamber Orchestra Endowment Fund (L)  
 WI Chapter of the American Planning Association Scholarship Fund  
 Wisconsin Foundation for School Music Fund  
 Wisconsin Heights Community Splash Pad Endowment  
 Wisconsin Heights Educational Foundation  
 Wisconsin Heights School District Endowment Fund  
 Wisconsin Society of Cytology Scholarship Fund  
 Wisconsin Sports Development Corp. Endowment  
 Wisconsin State Journal Youth Services Fund  
 Wisconsin Watch Fund  
 Wisconsin Wetlands Association Fund  
 Wisconsin Women in Government Endowment Fund

Wisconsin Women of Color Network Legacy Funds  
 Wisconsin Writers' Fund  
 Wisconsin Youth Symphony Orchestra's Endowment Fund  
 Aren J. Wish Memorial Fund  
 Kathleen E. Woit Fund  
 Wolf Solomon Fund  
 Murph and Anne Wolman Children's Fund for Madison  
 Wolman Family Share and Care Fund  
 Mari and Gary Wolter Fund  
 Mari and Gary Wolter Advised Passthrough Fund  
 Women Artists Forward Endowment Fund  
 Women Artists Forward Passthrough Fund  
 Women in Focus, Inc. Scholarship Endowment  
 Woodland Montessori School Endowment  
 Charles Ylvisaker Red Balloon Fund  
 YMCA of Dane County Foundation  
 You Made My Day Fund  
 Ed & Nancy Young Grandchildren Red Balloon Fund  
 Young Giving Fund  
 Youth Piano Scholarship Endowment  
 Yvette's Local Entrepreneur Fund  
 YWCA Madison Fund  
 YWCA Madison - Vilas Endowment Fund  
 Ruth & Allen Zacharias Fund for Madison Youth Arts Center  
 Ruth & Allen Zacharias Giving Fund  
 Janet K. Zimmerman Passthrough Fund  
 Frank A. Zuerner Memorial Scholarship Fund



## Bringing Joy to Seniors in Memory Care

In 2022, MCF awarded TNW Ensemble Theater a \$10,000 grant for its "Let's Connect!" program. Since then, this program has brought the joy of arts and movement to memory care nursing facilities in Greater Madison. This 10-workshop series explores acting, storytelling, singing, dancing, stretching, poem writing and more.

"Let's Connect" was designed to promote human connection, stimulate the imagination and enrich the lives of people living in memory care facilities. Over the last three years, the program has reached dozens of participants in eight facilities across Dane County.

TNW's co-producing artistic directors Donna Peckett and Danielle Dresden design and conduct each session of the workshop. "Despite participants not remembering our names week to week, they open up more and more over the course of our visits," they shared. "They become more forthcoming and interactive with us and with each other."



111 N. Fairchild Street, Suite 260  
Madison, WI 53703  
608-232-1763

NONPROFIT  
ORGANIZATION  
U.S. POSTAGE  
PAID  
MADISON WI  
PERMIT NO. 1742

