



2024 ANNUAL REPORT



Our Mission

To enhance the quality of life in the Middleton area for present and future generations

Our Structure

ME is an Affiliate Fund of Madison Community Foundation.
As an Affiliate, ME:

- Has every advantage of a foundation
- Maximizes earnings through pooled investing
- Minimizes administrative costs (1%)
- Has access to the professional staff of MCF



LETTER FROM THE Advisory Committee

This was a year of gratitude. We are grateful to our amazing donor network and our communities' vibrant nonprofit organizations. We are grateful to the Madison Community Foundation (MCF) for their ongoing guidance and management of the endowment.

During 2023 and into 2024, we took on new responsibilities and created new opportunities for growth and community impact.

- In 2023, the Middleton Area Public Lands Endowment (MAPLE) merged with Middleton Endowment (ME), bringing new funds and an emphasis on environment/public lands. Our two endowments are a good fit. Over the years, ME has supported public lands through multiple grants. Sharing a single group of volunteer advisors for the two funds allows for more efficient operation and more time for our priorities.
- In 2024, we expanded choices for donors by designating an Environmental/Social Governance (ESG) option for giving in addition to the traditional option. This new option prompted a significant donation from an existing MCF family fund.

As a result of the MAPLE merger, the donation from the family fund, individual donations and investment gains, we reached a new milestone—a year-end balance of \$404,872.83.

We are working in 2025 to increase the visibility of Middleton Endowment and its impact in the City of Middleton, the Middleton-Cross Plains Area School District and the west side of Madison. With increased visibility, we are seeking additional support for the endowment from individuals, businesses and organizations. Additional financial support helps ensure that the endowment grows longterm to meet the growing needs of the community.

We are volunteers and we welcome your support. We look forward to working with you—our neighbors—to enhance the quality of life in the Middleton area for present and future generations.

With deep gratitude,

Lan Lam, President

Paul Kinne, Vice-President

Cecilie Ballard, Secretary

Curtis Fuszard, Treasurer

Annette Ashley

Mike Davis

Kay Gashette

Kelly Hilyard

Dana Monogue

Why do we serve?

As an Advisory Committee, we volunteer to make the endowment known in the community, seek applications from nonprofits, review applications, recommend grant awards to MCF and promote the growth of the fund

Lan Lam

"I serve as an Advisory Committee member for the Middleton Endowment because I believe in the power of investing in our local community. Our committee is made up of community members and donors who volunteer their time, just like the many organizations we support. Through the endowment, we support organizations we all know and love—such as WayForward, Central Midwest Ballet, Luke's Closet, Gilda's Club and many more. These groups shape our community by providing vital services and enriching lives. By giving locally, we strengthen the place we call home and ensure a lasting impact for generations to come."

Annette Ashley

"We donate to the Middleton Endowment because it supports educational programs, local arts and culture, community development, youth services, environmental sustainability, and other charitable efforts that enhance well-being and growth in Middleton."

Dana Monogue

"I serve on the Advisory Committee because it is a privilege to support local nonprofit organizations that do tremendous work in our community. Each of the programs we support has a direct, positive impact on our collective quality of life, and being able to show real support to others is such an honor!"

Curtis Fuszard

"When my wife and I moved to Middleton in 2009, we quickly realized it is "Ground Zero" for family-related activities. Shortly thereafter, our son and his family moved up the street. All three generations are enjoying the parks, trails, gathering places and so much more. One small way for me to express my gratitude is serving on the Middleton Endowment Advisory Committee. It is a tremendous honor to help fund projects that are directly and positively impacting residents of this great community, including my family."

Cecilie Hueber

"Serving as a member of the Middleton Endowment Committee has been an incredible honor. Not only do I get to work alongside pillars of our community, but it is also a joy to learn about and support the amazing things happening in and around Middleton. The creativity and thoughtfulness that is shown in grant-applying organizations is a wonderful testament to the Good Neighbor City."

Paul Kinne

"My family and I have benefited from living in the Middleton community for over 20 years. Serving on the Endowment Committee has given me a chance to give back specifically to this wonderful community, in a material way. It makes me so proud to see our grant recipients improve lives in the Middleton area, and I am so thankful to have been a part of it on the Advisory Committee."

Recent Grants

We awarded eleven grants and one scholarship in 2024, plus twelve grants in 2023. Nonprofits came to us to support:

- **education initiatives** – reading, financial literacy, healthy eating, healthy living
- **basic living needs** – food, clothing, physical and mental health
- **cultural activities** – music, theater, dance
- **employment services** – recruitment and placement of veterans, workers' education
- **play!** – an imagination play station at the library

Cecile Druzba Memorial Scholarship

Cecile Druzba was a member of the ME Advisory Committee and worked with the Middleton Chamber of Commerce. After her death in 2019, her family donated funds to ME for a scholarship to a high school student. ME continues to fund a \$500 scholarship to a graduating senior. Middleton High School selects the senior for the award.

WayForward Resources

WayForward Resources is seeing tremendous increases in the number of clients served and client visits to their food pantry. A \$1,000 grant from Middleton Endowment increased WayForward Resources' ability to procure food in bulk and stretch the dollars to provide 480 meals to our neighbors in need over a few months.

"We immediately used your generous grant funds to purchase meat and shelf staples, including culturally diverse foods recommended by guests in the regular surveys we conduct."

- Peggy Halloran, WayForward



WayForward Resources Food Pantry

Mission: Workforce Alliance, Middleton Chamber of Commerce Foundation

Mission: Workforce Alliance (MWA) addresses workforce shortage challenges. The program simplifies the recruitment process, making it more accessible and cost-effective for businesses. Through resources and training offered as part of the program, businesses better understand and leverage the diverse capabilities and experiences of veteran employees. As a new program launched this year, MWA has made incredible progress and currently has 66 Transitioning Service Members and Veterans in its candidate portal and 29 business partners.

"Without the support of Middleton Endowment, we would not have been able to make Mission: Workforce Alliance the success it is."

- Kate Miller, Mission: Workforce Alliance

Central Midwest Ballet

Classical ballet's sweat-soaking, muscle-toning cardio training enhances young dancers' flexibility, improving posture and stamina while building upon coordination and concentration. Through training, dancers also develop discipline, confidence, grit, focus, creativity and teamwork. They learn the value of community building through storytelling. The irrefutable link between musicality and mathematics leads many classical ballet students to pursue STEM degrees at the collegiate level. There is more to this art form than perfecting arabesques or donning sparkling tutus.

"Middleton Endowment granted CMB \$1,000 to purchase additional ballet barres. Thanks for believing in the merits of our classical ballet education."

- Kendra Thompson,
Central Midwest
Ballet



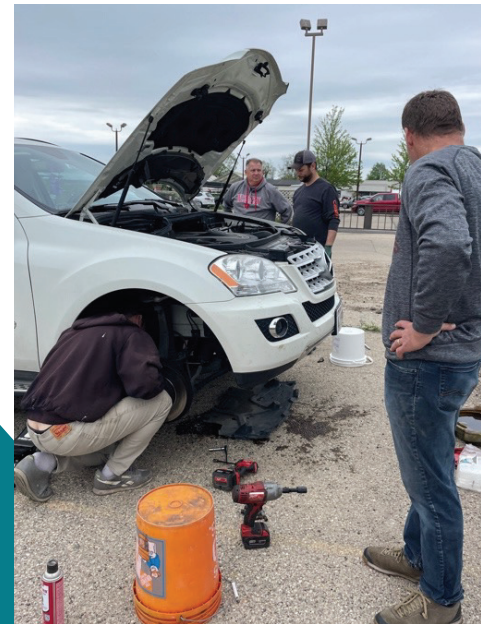
CMB Students on new barres

Yada Fair Trade

Yada's quarterly car care clinics, run by a team of committed volunteers, are provided free of charge to help ensure survivors of sex trafficking have access to reliable, efficient transportation. Transportation is a critical factor in allowing a person to escape poverty and is extremely important to women trying to leave the world of trafficking. With the help of the grant, at the July 2024 car care clinic, seven cars received oil changes, fluid checks and overall maintenance checks, plus a more significant repair was completed on the car of a single mom.

"Because of Middleton Endowment, Yada was able to give more exploited women the dependable transportation they need to live in safer neighborhoods, seek meaningful employment and turn their lives around."

- Beth Williams, Yada



Yada Free Car Clinic Volunteers



Yada Fair Trade & Resale
Beth Williams | Director/Founder
Yadafr.com | 2620 parmenter st, Middleton



Tri 4 Schools

Tri 4 Schools

Active Youth Wisconsin (the parent nonprofit of Tri 4 Schools) is dedicated to helping kids lead healthier, more active lives. Through inclusive programs and events, they provide opportunities for all children to build confidence, resilience and lifelong healthy habits.

Thanks to a grant from the Middleton Endowment, Tri 4 Schools refurbished its bike fleet, ensuring over 125 Middleton-area kids could participate in their programs and events. This support also contributed over \$3,000 to the health and wellness budgets of more than 20 local schools. Last spring, Tri 4 Schools ran after-school training programs at 20 schools—including five in the MCPASD—making activity accessible to all. Their free bike fleet removes barriers, allowing hundreds of kids to train and compete each year.

"We are so grateful to the Middleton Endowment Committee for believing in our mission. Your support has made a lasting impact on the children of Middleton and beyond."

– Amanda Marek, Tri 4 Schools



Gilda's Club Small Group



Volunteers Pack Bags for Food Program

Middleton-Cross Plains Area School District Foundation

18% of students in the Middleton-Cross Plains Area School District (MCPASD) qualify for free and reduced lunches. The MCPASD Foundation, the MCPASD and seven area churches have come together to help make sure that kids aren't hungry on the weekends. Food is procured and packed in backpacks by members of the churches (the cost is shared by the MCPASD Foundation and the churches). Social workers and counselors distribute the bags to students at nine schools weekly.

"Our usage is up another 10% and our costs continue to rise. We are so thankful for gifts such as yours."

– Amber Kiggins-Leifheit, Middleton-Cross Plains Area School District Foundation

Gilda's Club

With the help of Middleton Endowment, Gilda's Club Madison offered multiple weekly cancer support groups for both adults and children from June 2023 to June 2024. In 2024, they provided vital emotional support to 1,094 unique individuals through 7,449 visits. Their programs included 582 support group sessions (2,755 visits), and 708 educational, healthy living and social events.

"Gilda's Club believes that everyone impacted by cancer deserves access to support and resources and is dedicated to ensuring that their programs are accessible and inclusive, particularly for those in underserved groups."

– Lannia Stenz, Executive Director/CEO



History of ME's Grantmaking

The Middleton Endowment (ME) has a nearly 20-year history working to improve the quality of life in the Middleton area. ME awards funds to 501(c)(3) nonprofit organizations through a grant application process. From its start, we have focused awards on cultural enrichment, community development, education, natural and historic preservation, and the needs of residents in the Middleton area.

Since affiliating with the Madison Community Foundation in 2007, Middleton Endowment has given \$109,485 through 119 grants or scholarships to 53 different nonprofit organizations. Some nonprofits received a grant more than once.

Our recent grants tell the story of what is happening in the community now. Grants given in previous years tell a history of Middleton.

Some of the grants support newer organizations—start-ups—or a new project within an existing organization. Others, such as WayForward Resources (previously known as MOM), have received multiple grants, and the needs of the community for their services continues to grow.

Community needs drive the work of nonprofits and the grantmaking of ME. The following list of all grant recipients tells the story of ME's commitment to its vision and goals.

Alzheimer's & Dementia Alliance of Wisconsin
 Alzheimer's Association
 American Parkinson Disease Association WI Chapter
 Badger Honor Flight, Inc.
 Bridge Volunteering
 Center for Community Stewardship
 Central Midwest Ballet, Inc.
 City of Middleton
 Clark Street Community School
 Classmates Literacy Foundation, Inc.
 Community Table Fund
 Dean Foundation
 First Lutheran Church
 Forward Performing Arts, Inc.
 Friends of Pheasant Branch Conservancy, Inc.
 Friends of the Geology Museum, UW Madison
 Friends of the Middleton Public Library
 Friends of the Performing Arts Center
 Gilda's Club Madison, Wisconsin
 Gio's Garden, Inc.
 Glacier Creek Middle School
 Grand Aspirations
 Habitat for Humanity of Dane County
 Healthy Community Kitchen
 Holy Wisdom Monastery
 Journey Mental Health Center
 Junior Achievement of Wisconsin
 Kromrey Middle School
 Madison Reading Project
 Middleton Area Historical Society
 Middleton Chamber of Commerce Foundation
 Middleton Community Orchestra, Inc.

Middleton Community Police Partnership, Inc.
 Middleton High School
 Middleton Players Theatre
 Middleton United Soccer Club
 Middleton-Cross Plains Area School District
 Middleton-Cross Plains Area School District Foundation
 Midwest Wilderness First Aid Training Services, Inc.
 National Mustard Museum
 Out of the Shell Sculpture Campaign Fund
 REACH-a-Child
 Red Line Club
 Restoring Hope Transplant House
 SAAV Program, Inc.
 Specialty Care Free Clinic
 St. Luke's Lutheran Church
 Tri 4 Schools
 University of Tampa
 WayForward Resources
 West Madison Youth Special Olympics
 Worker Justice Wisconsin
 Yada Project



How to Give

We appreciate your continued support. Giving to Middleton Endowment through the Madison Community Foundation is easy.

You may make a donation to the Middleton Endowment general fund, MAPLE, or our Environmental/Social Governance option at www.madisongives.org/middleton.



In addition to cash, Madison Community Foundation handles donations of a wide variety of assets:

- Mutual Funds or Stocks
- IRA Charitable Rollover
- Life Insurance Proceeds
- Retirement Plan
- Charitable Gift Annuities
- Bequests in a Will or Trust
- Real Estate

If you have questions about gift options, please contact David Koehler, Vice President of Donor Engagement, at **608-232-1763** or by email at dkoehler@madisongives.org.

If you know others who would like to support our work, or nonprofit organizations that would benefit from our support, please let us know.

Contact: Middleton Endowment Advisory Committee; Email: middletonendowment@gmail.com

The Middleton Endowment, Middleton Endowment-ESG Fund, and MAPLE Fund are component funds of the Madison Community Foundation, a tax-exempt 501(c)(3) community trust. A financial statement of the Madison Community Foundation disclosing assets, liabilities, fund balances, revenue and expenses for the preceding fiscal year is available at www.madisongives.org/fs and will be provided to any person upon request.

We are grateful to the donors who have helped grow the Middleton Endowment since 2007.

Nicholas Adams

AJ Sue Consulting

AlphaGraphics

American Girl Brands, LLC

American Transmission Co., LLC

Samantha Annen

Anonymous Donors

Annette Wencil and
Christopher L. Ashley

Assemblage Architects

Associated Bank

Baer Insurance Services, Inc.

Diane K. Ballweg

Benjamin D. Ballweg

Estate of David Baltes

Aleta Barmore

Virginia M. Bartelt and
Doug Gerhart

Lawrence Bechler

The Benevity Community
Impact Fund

Luise Beringer

Ronald C. and Kris Berman

Lawrence J. and Julie M. Bernauer

Anna M. Biermeier and
Roger L. Hanson

BMO Harris Bank

Miriam S. and Brian M. Boegel

Karen A. and Joseph K. Boettinger

Neal and Betsy Boudette

Gurdip S. and Dorothy W. Brar

Nicole C. and Steve Broyles

Estate of Julie Brunette

BT2, Inc.

Capital Brewery Company, Inc.

Capitol Bank

Lisa R. Carpenter

Patrick and Mary Cassady

Celerity Staffing Solutions

Daniel J. Chart

Closets by Techline

CPU Solutions, Inc.

"It was a privilege to serve and guide the Middleton Endowment during its formative years. With the invaluable support of the Madison Community Foundation and local leaders, the board was able to direct local donations, grow the principal fund, and enhance community programs to positively impact families across Middleton and beyond. I continue to support the ME board and community members who choose to invest in Middleton."

- Dan Loichinger

Craftsman Table & Tap

Cress Funeral & Cremation Service

Craig C. Culver

Deb Dagitz

Liz Winter Dannenbaum

Michael K. Davis

Megan E. and Mark P. Davis

Deb Saeger and Chris McKeachie

Frances DeGraff

Colette Denu

Lois A. and Randy L. Dickson

James and Doolin

Dennis and Kathy Dorn

John Druzba

Matthew F. Druzba

Lloyd L. and Patrick D. Eagan

M. Bruce Edmonson and
Kathleen M. Massoth

Jonathan S. and Adrienne S. Ehrhardt

Electronic Theatre Controls, Inc.

James E. and Lynne F. Emerick

Daniel W. and Natalie Erdman

William J. and Mary B. Erpenbach

Estate of Caryl F. and
Howard Walter Bremer

Clarisse and Brian Ethridge

Colleen and Bill Feist

Fidelity Charitable Gift Fund

Friends of the Middleton–Cross Plains
Performing Arts Center

Jan Fulwiler and Robin Gates

Curtis J. and Barbara E. Fuszard

Terry L. Gibson

Peter J. and Vicki Gunderson

Gunderson Funeral and
Cremation Care

Wava Haney

Ruth E. Hanson

John A. Helf

Stephen and Bonnie Hewitt

Perry and Sheila Hibner

Kelly Hilyard

Cynthia S. Hiteman

Brian J. and Julie A. Hornung

Nancy C. Howard and Steve Sprague

Estate of Paul J. Jaeger

Julann Jatzczak and Michael K. Davis

Janet H. and Michael Kane

Judith Karofsky

Eileen M. Kelley

Robert and Joanne Kennedy

Keva Sports Center, LLC

Paul A. Kinne

Kiwanis Club of Middleton

Knothe + Bruce Architects

Michael Kollath

Kollath & Associates CPA LLC

Steven S. Koslov and Mary A. Fulton

Michael and Debra Kutchin

Nancy Labanara

Shaun LaJeunesse

Lan Lam

Jon and Sarah Lancaster

Christine M. Laufenberg

Mary A. Lawson

David A. and Kris Lenz

Andrew B. and Pamela S. Lewis

Estate of Philip and Elizabeth A. Lewis

Judith R. and Duane C. Lewison

Charles R. and Tricia G. Liberty

Liberty Professional Services, LLC

Barbara Lockwood

Dan and Lisa Loichinger

John Charles and Laura H. Love

Lycon, Inc.

Robert W. and Margaret Lyons

Adrianne C. Machina

Madison Community Foundation

Madison No Fear Dentistry

Madi Mahal

Kevin J. and Lynnae Mahaney

Joshua D. Marron

Janice I. Martin

Donald J. Mash

George J. and Lisa M. Mavroulis

Brian W. and Rebecca L. Mayhew

Molly McDermott

Nancy A. McGill

Daniel K. and Catherine M. McGuire

Maureen McMahon and Carson Fulton

Nancy J. and Kim S. Meadows

Gordon Meicher

Meicher & Associates, LLP

MG&E Foundation

Middleton Lions Club

Middleton Public Lands, Recreation
& Forestry Department

Monks in the Middle, LLC

Monona Bank

Taryn Moran

Elizabeth L. Moreland and
James Ekman

Stephanie Moen Mueller

Brad and Stephanie M. Mueller

National Electrostatics Corp.
Paul E. Nelson and
Joanna M. Richard
Network Cabling Solutions, LLC
Edward Neumueller
Tami Newman
Katherine L. and Larry T. Nix
North Central Group
Hamid Noughani and Ladan
Mostaghimi Tehrani
Robin and Mike Nyffeler
Steven and Kathryn M. Olson
Mark and Lisa P. Opitz
The Park Bank
Patricia M. Paska
Pellitteri Waste Systems
James B. Peters and
Susan H. Kavulich
Robert and Cynthia Ramlet
William L. and Kay L. Reis
M. Ann Repka
RESCO Rural Electric Supply
Cooperative
Andrew J. Richards
Raymond T. and Cathy Riddle

J. Shannon and Carrie J. Riley
Hailey Roessler
Robert and Lori Rusch
Elizabeth T. Russell
Russell Law
S. Greve & Son, Inc.
Marjorie H. Schuett and Robert Hoot
Lee H. Schwartz
Molly Schwebach
Lynda M. Sharpe
Cynthia F. and David D. Shaw
Rose C. and James Sime
Sam and Gladys Simon
Simply Swimming, LLC
Kurt J. and Kristine A. Sonnentag
Marianne Spoon
Springs Window Fashions
Standard Imaging, Inc.

Alan J. Sue and Elise C. Davis
Mark A. Sullivan and Margaret S. Cole
Summit Credit Union
TDS Telecom Service, LLC
Cheri Teal
James Thuesen
Annie L. and Michael Thym
Tornado Marketing, Inc.
Thomas A. and Sandra A. Vandervest
Thomas and Rose Webber
John and Jane Wegenke
Deb Weitzel
Lyman F. and Lyn G. Wible
Donna C. and Nathan F. Williams
Joan W. and Steven G. Ziegler
Scott and Ann Zimmerman
Lisa Zuberbuhler
Kathleen Zwank

"We have lived in the Middleton area for more than 50 years and love what the community has given us. We cannot pay back what we've gotten, but we trust our donations to the Middleton Endowment will continue to support local programs for many years. We trust Middleton Endowment's track record—they find and make grants to organizations that make a big difference!"

— Anna Biermeier and Roger Hanson

Financial Report

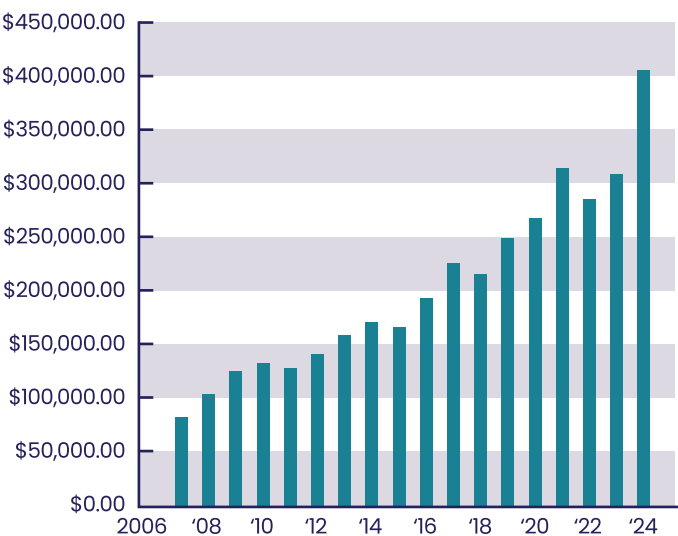
In the early days of ME, it was more likely that a grant to an organization would be no more than \$500. For the last few years, we have been able to award grants of \$1,000 each to organizations, plus \$1,000 through a scholarship for a Middleton High School senior.

As our endowment grows, we can give more where needed. And we can reach more people in our community through grants to more organizations.

Middleton Endowment Fund Activity Report, including MAPLE and ME ESG Funds

Beginning Balance 1/1/2024	\$ 379,010.57
Contributions	3,874.37
Interests/Dividends	4,018.65
Investments Gains/Losses	33,194.41
MCF Support Costs	(3,932.19)
Trustee Fees	(792.98)
Grants	(10,500)
Ending Balance 12/31/2024	\$404,872.83

End of Year Balance








Middleton
ENDOWMENT